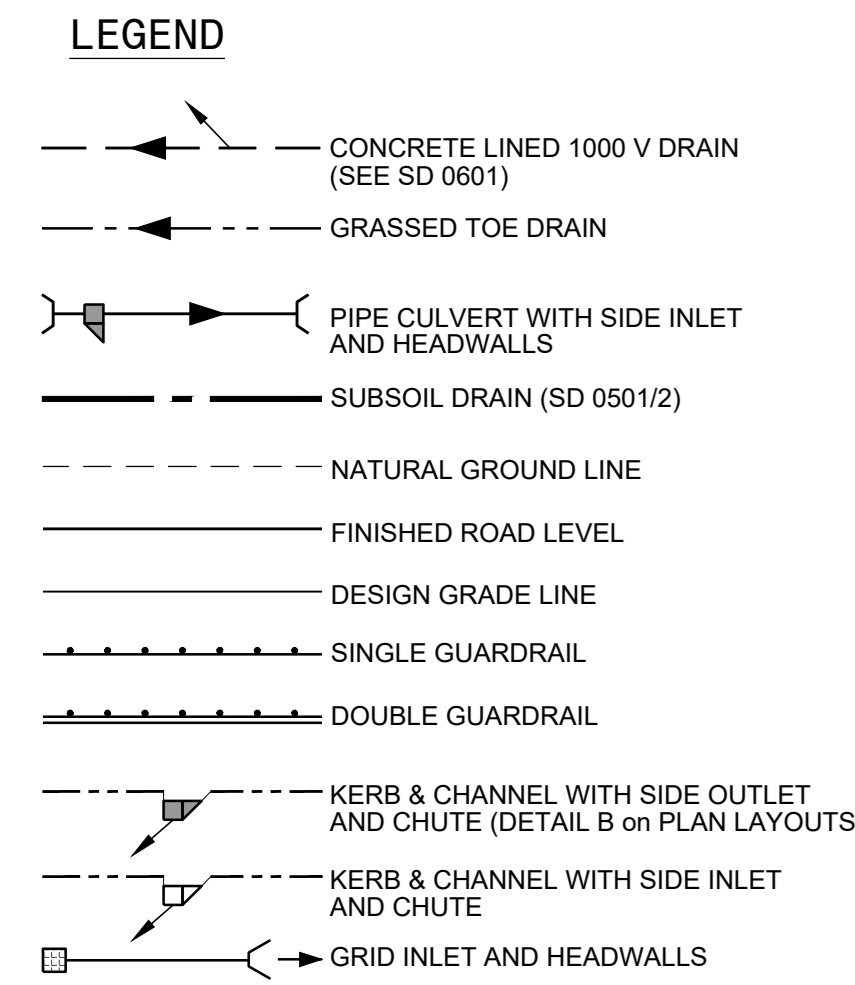
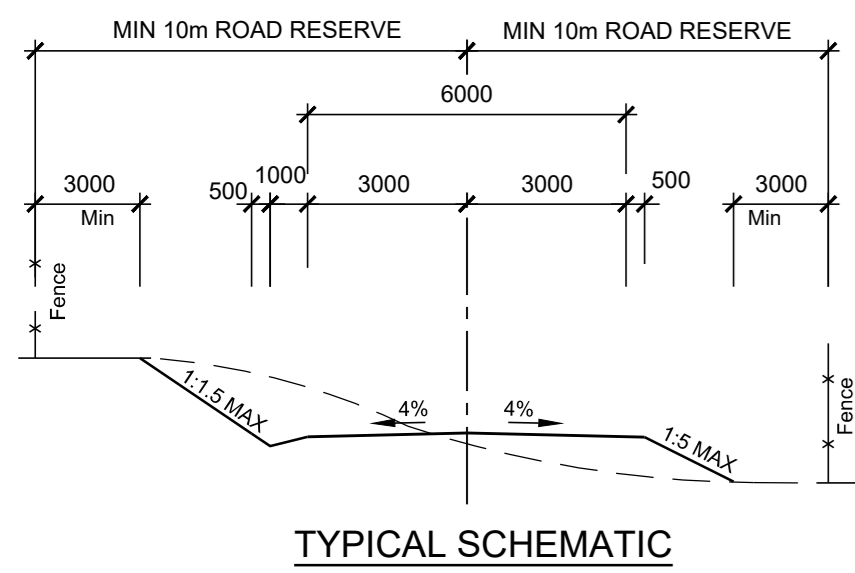
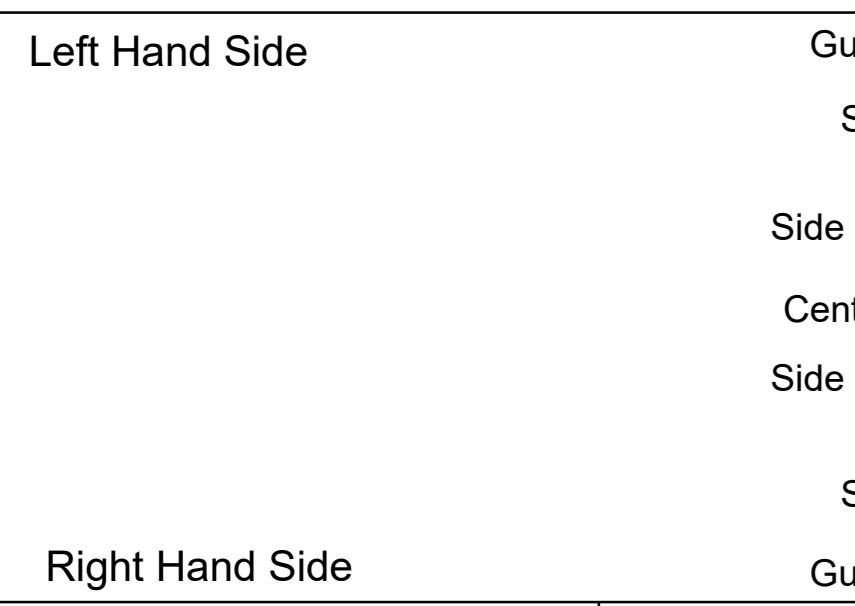


**NOTES:**  
 1) PAVEMENT LAYERS AS PER TYPICAL CROSS SECTION OF ACCESS/ SERVICE ROADS AS DEPICTED ON STANDARD DETAILS DRAWING SD 0210 (TYPE 6 DISTRICT ROAD MOUNTAINOUS TERRAIN)



FOR APPROVAL



Earthwork Quantities	Cut (m³)	
	Fill (m³)	

Vertical Alignment	V-cl	
	K-val	

Grade (%)	-3.00 Metres Left of Centre Line	
	PIVOT POINT 0.00 Centre Line	
	3.00 Metres Right of Centre Line	

Superelevation	Left Hand Edge	
	Right Hand Edge	
	Horizontal Cardinal Points	

Horizontal Alignment	Radius	
	Tangent Length	
	Curve Length	

Staked Kilometre Distance	
---------------------------	--

SYMBOL	DATE	DESCRIPTION	CHECKED	SIGNED
AMENDMENTS				

<b>AS BUILT</b>	
SUPERVISING ENGINEER	DATE
SUPERVISING AUTHORITY	

CONTINUED FROM:	-	DESIGNED BY:	N. MAHOMED
CONTINUED ON:	-	CHECKED BY:	S. NAIDOO
CROSS SECTION NO.:	C 46067 - C 46077	DRAWN BY:	B. FYNN
PLAN NO.:	C 46052 - C 46056	CHECKED BY:	S. NAIDOO
NAIDU CONSULTING - CONSULTING ENGINEER		KEVIN GOVENDER	
SIGN		DATE	

Designed by-

Naidu Consulting no.:- D464/2900/01

Department: Transport  
 Province of KwaZulu-Natal

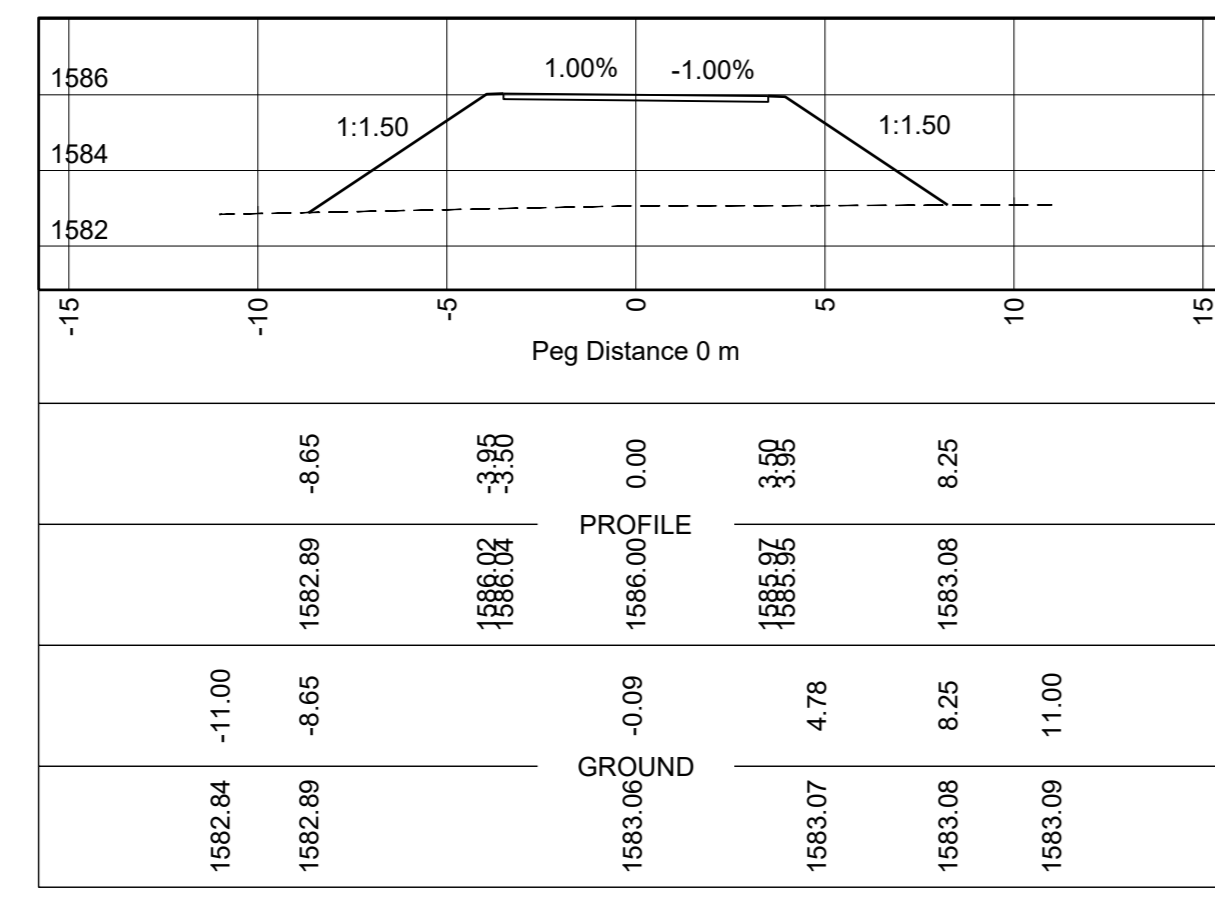
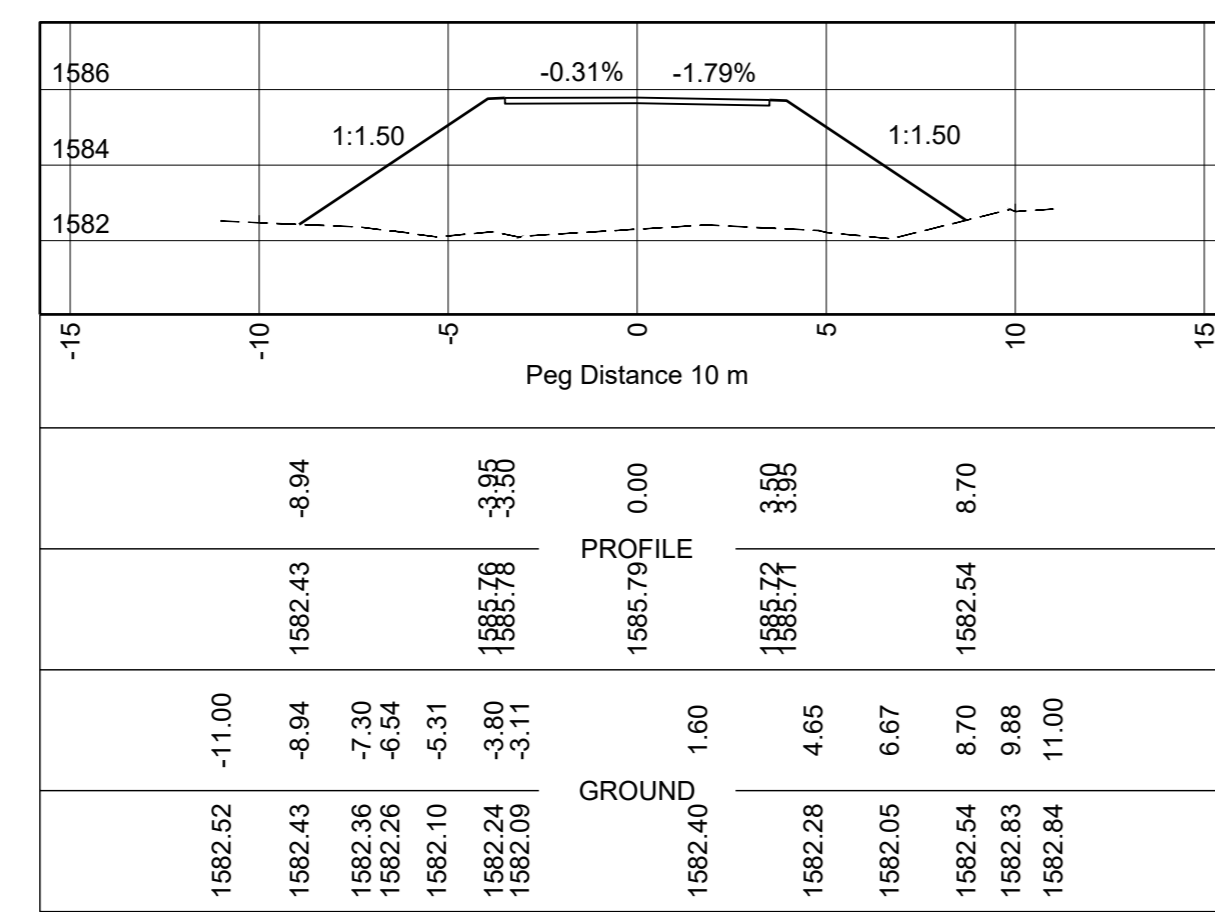
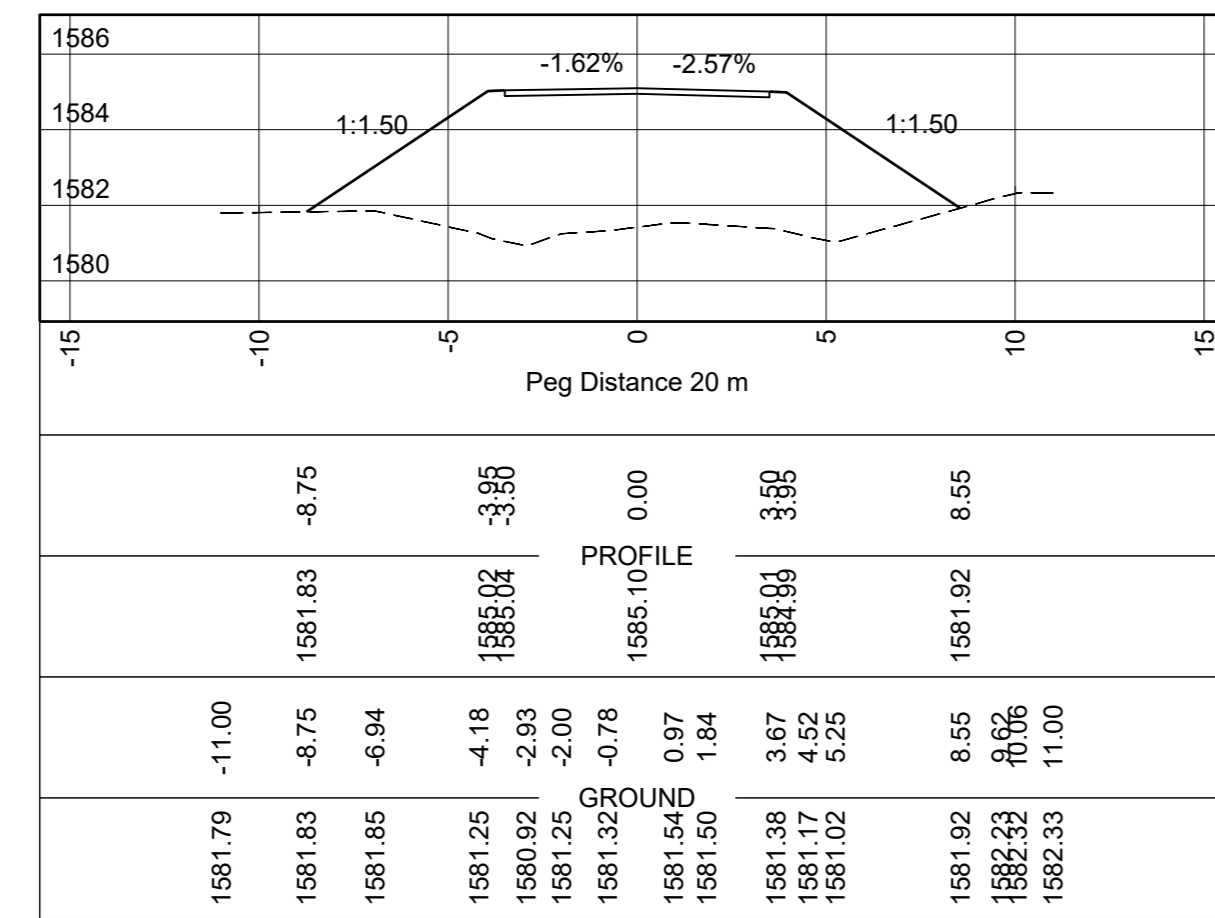
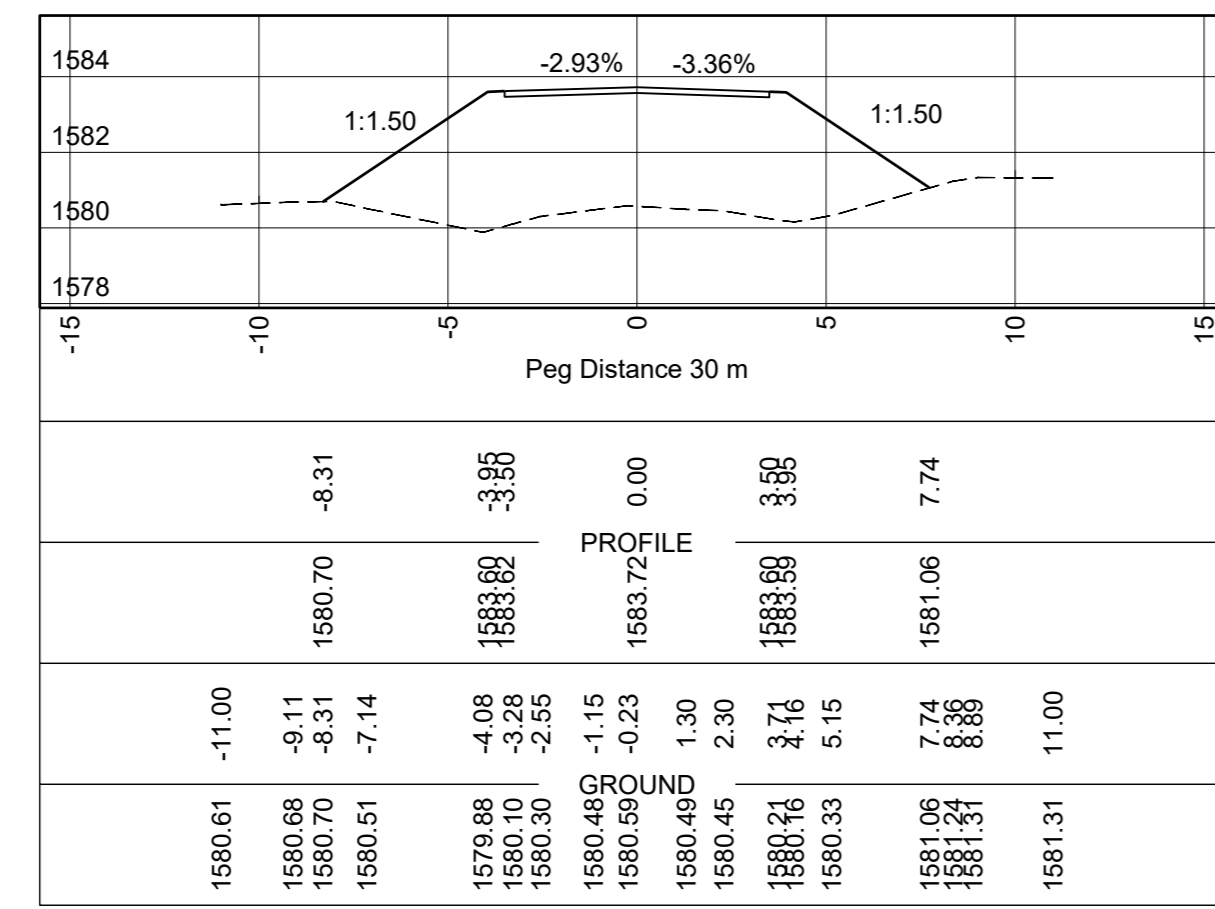
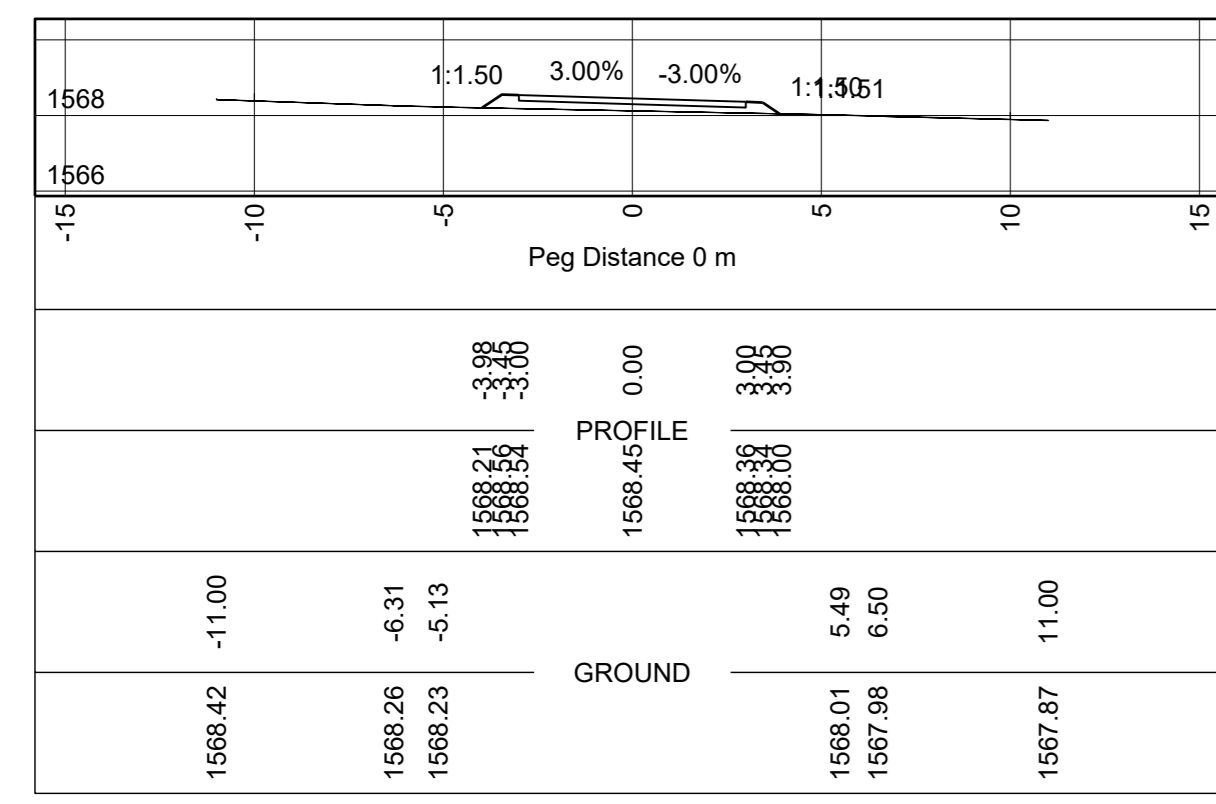
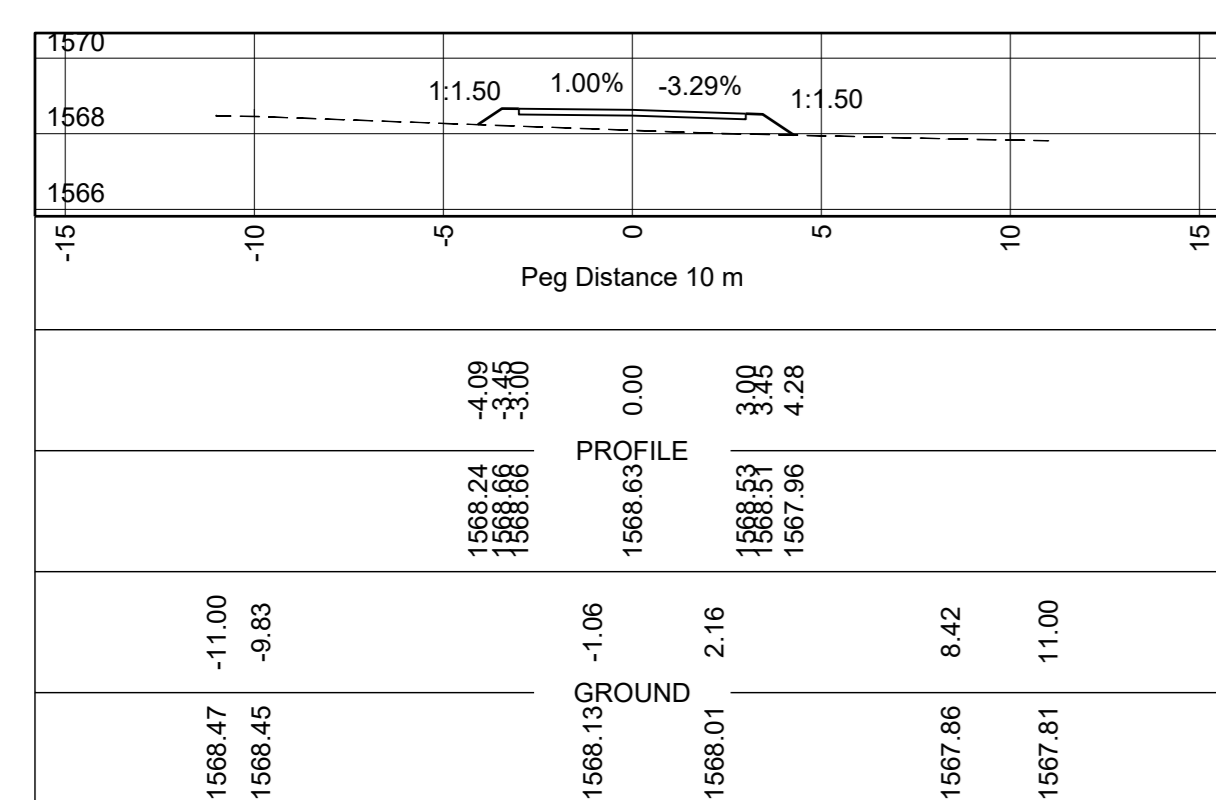
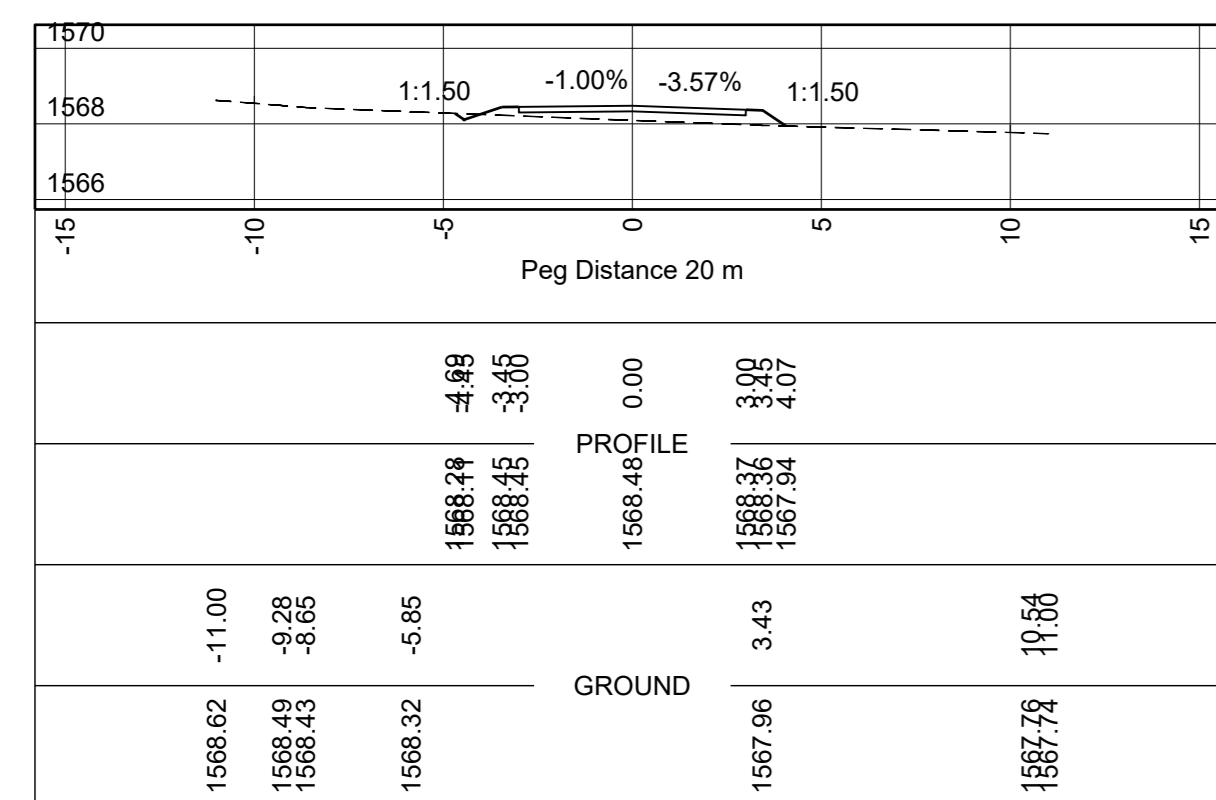
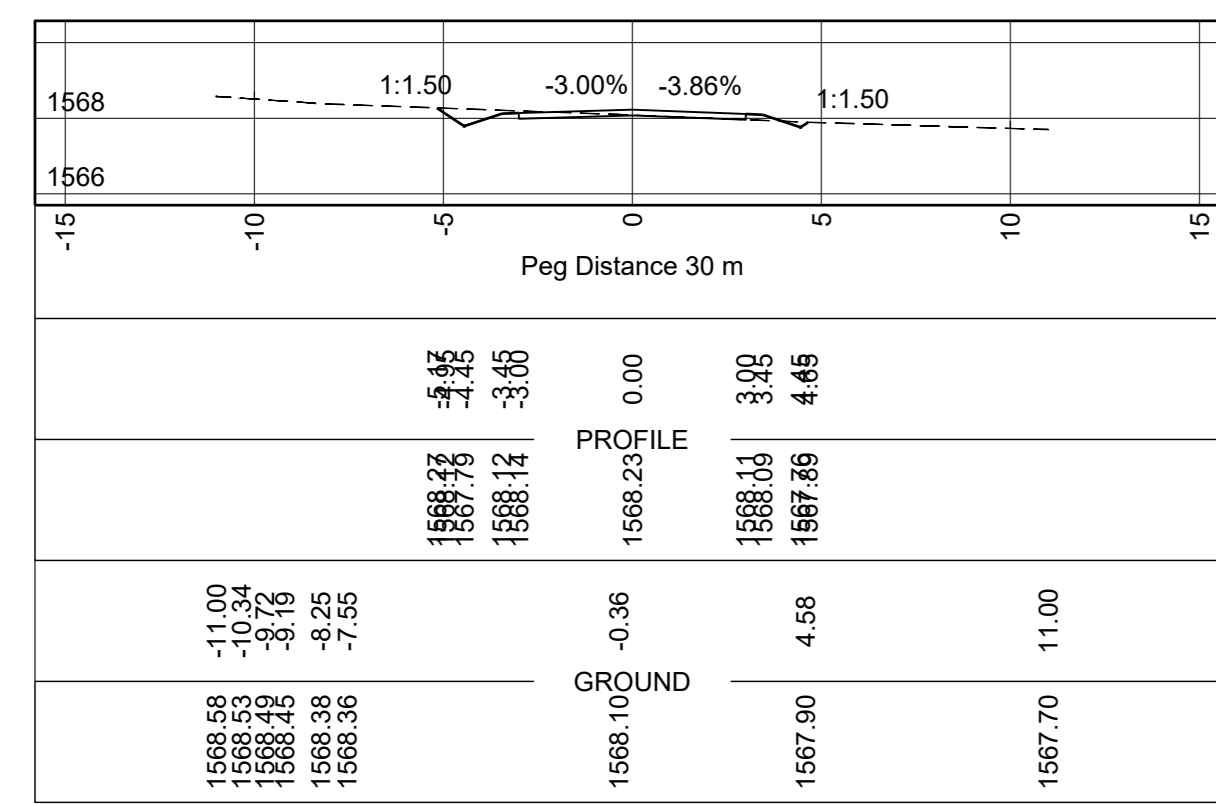
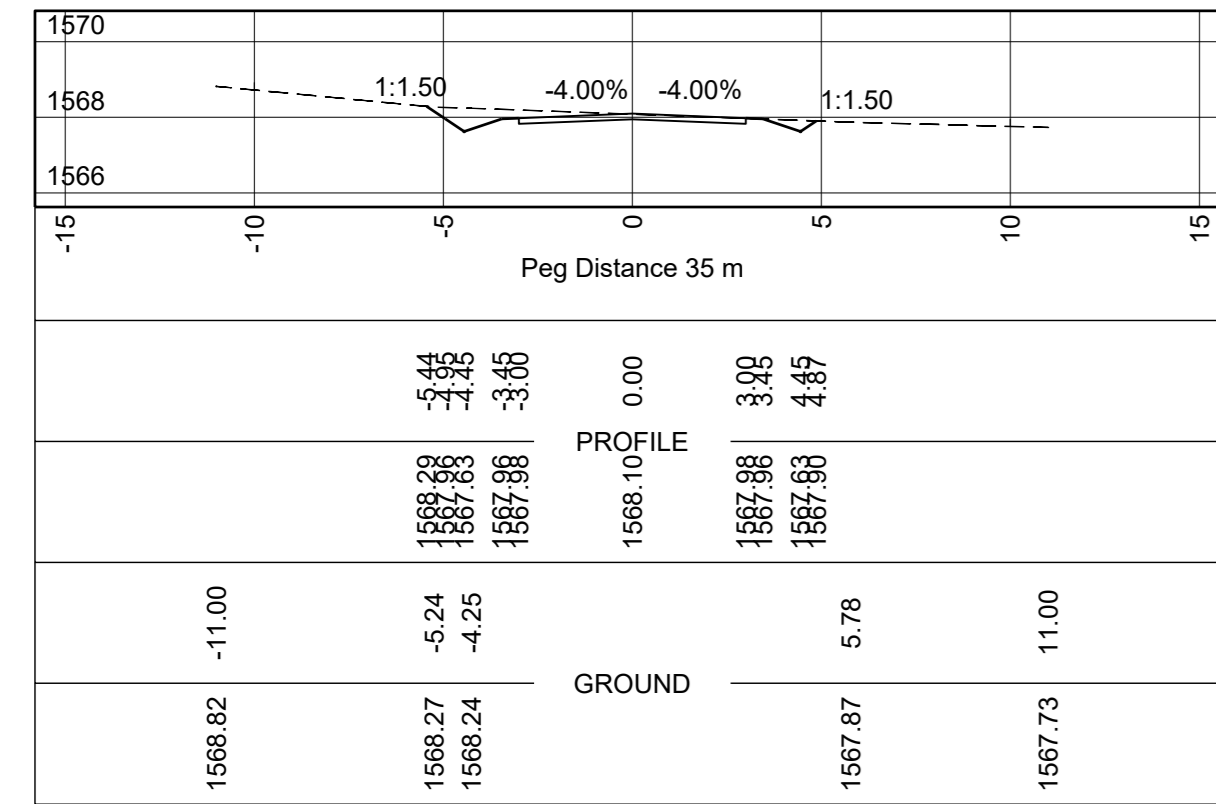
MAIN ROAD 165 (HOWICK - MOOI RIVER)

PORTION  
 UPGRADING PORTION OF P165 : KM 38+295 TO KM 46+595  
 HOWICK TO MOOI RIVER  
 LONGITUDINAL SECTION DESIGN FOR INTERSECTING/ ACCESS ROADS

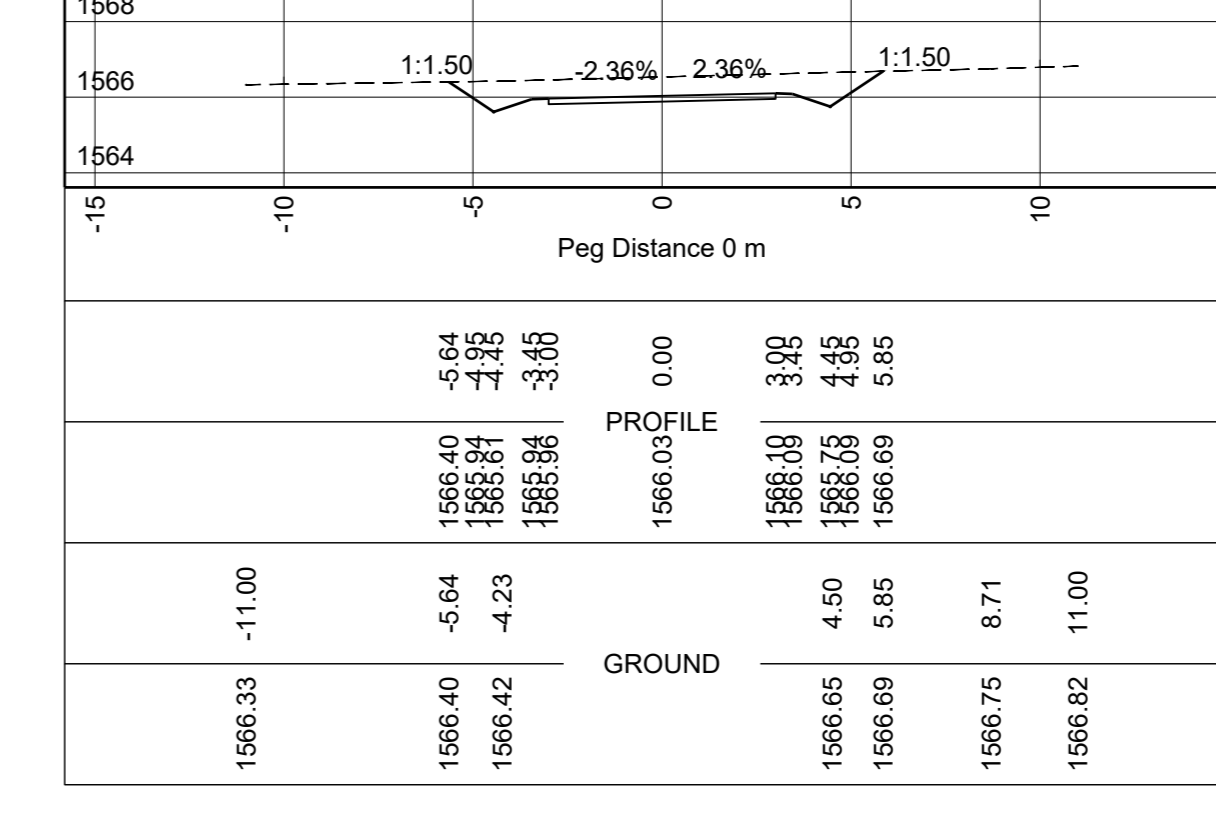
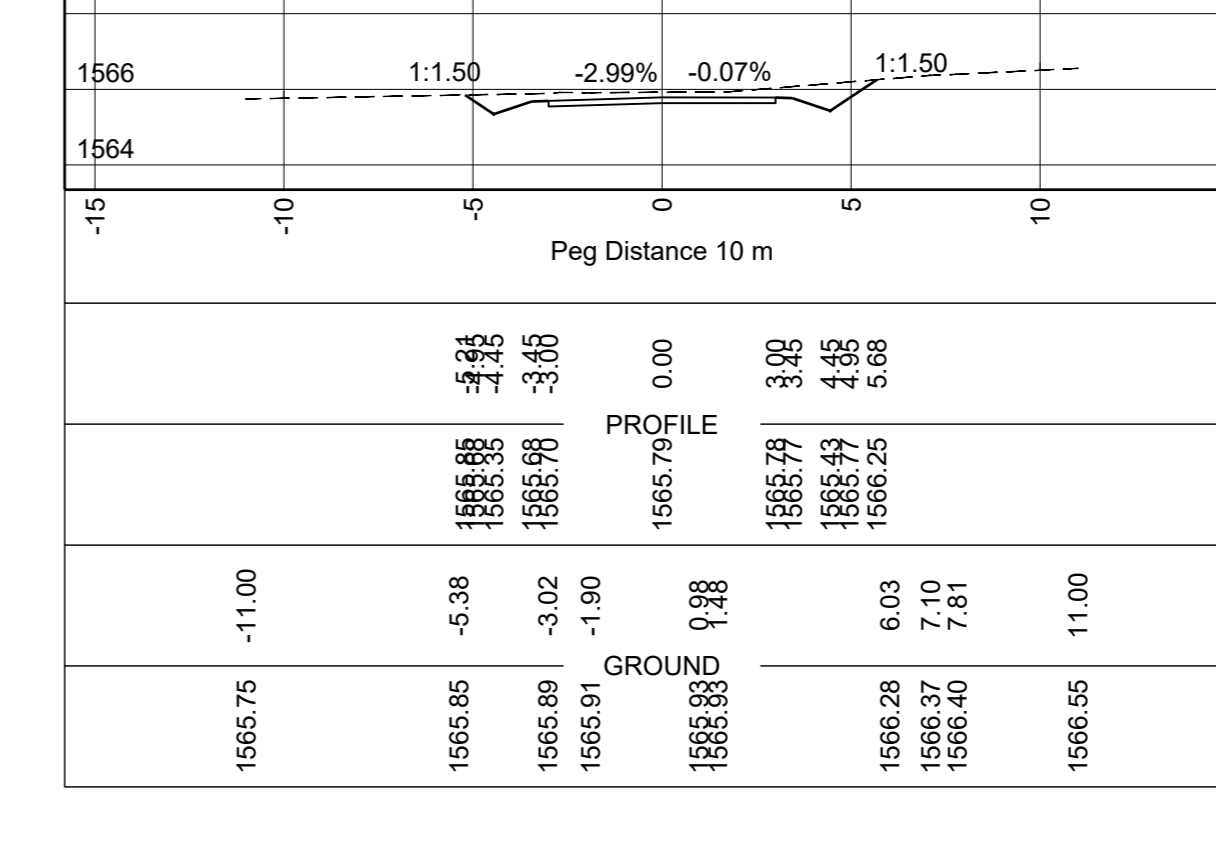
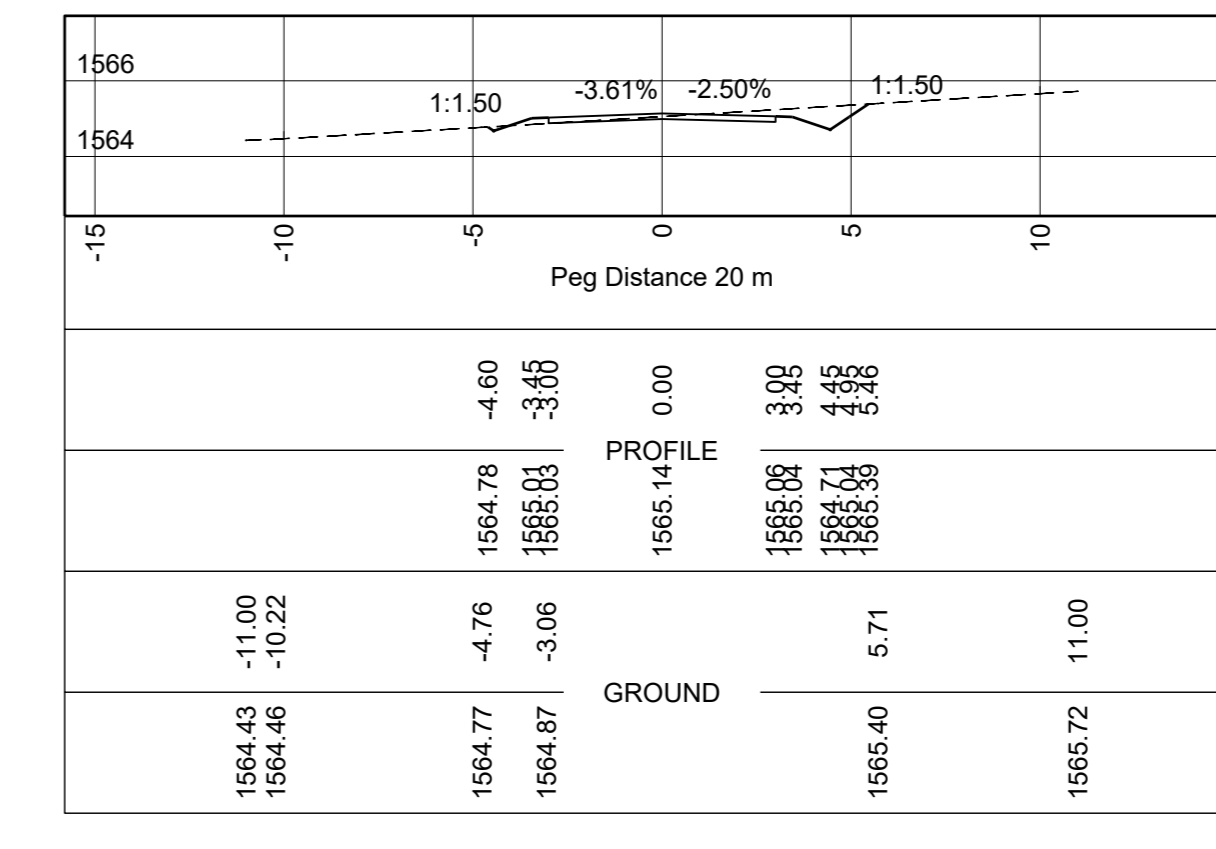
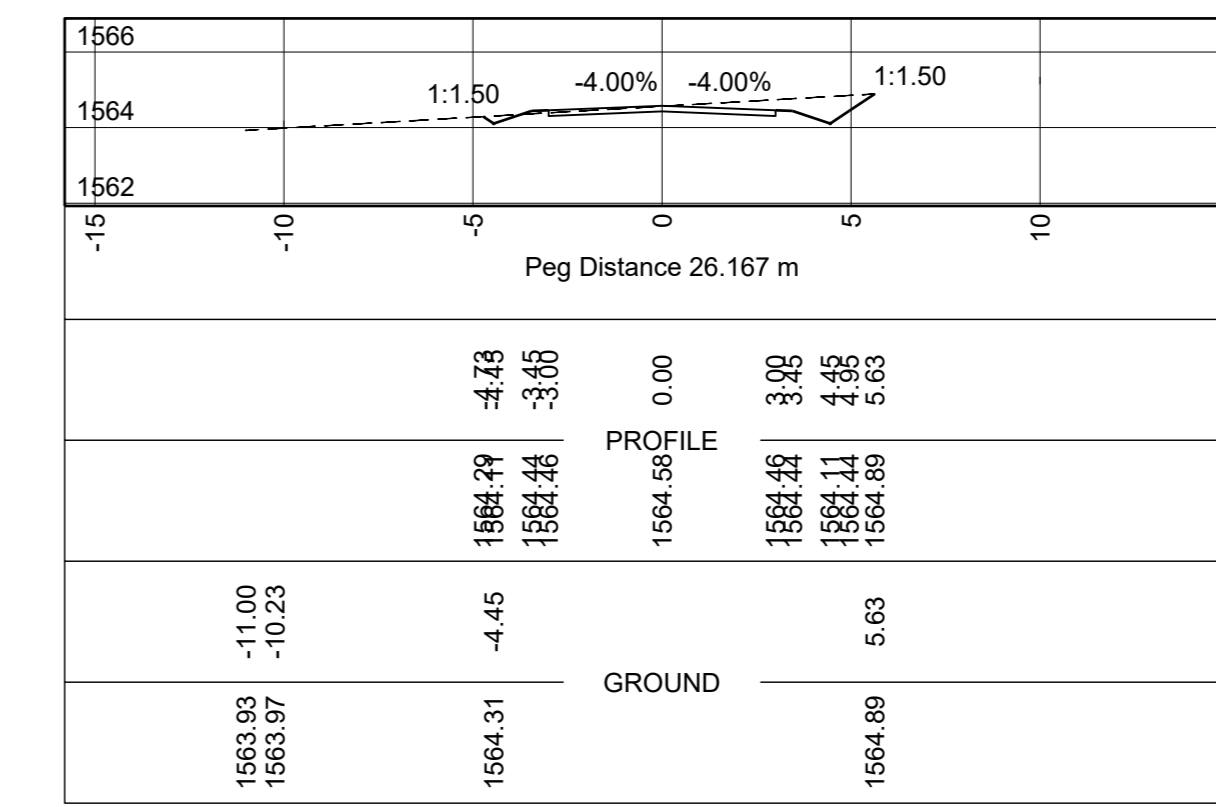
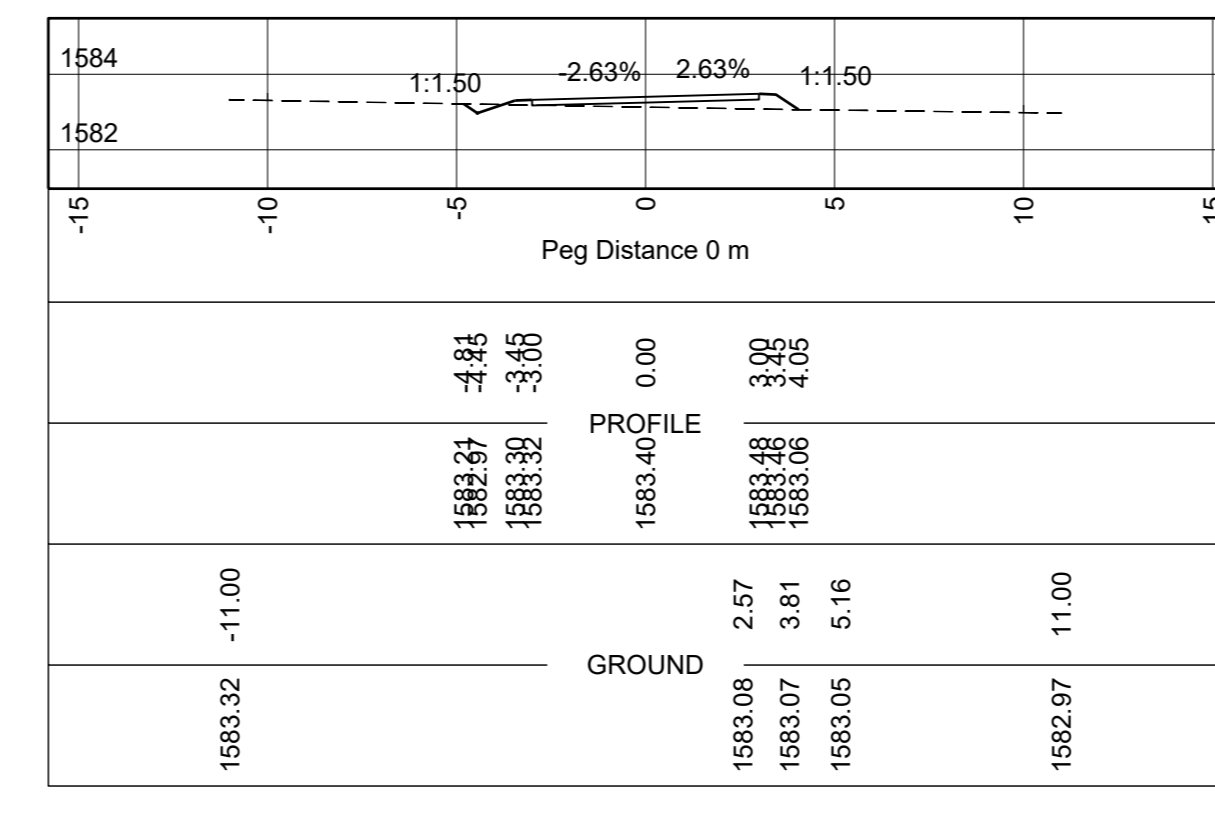
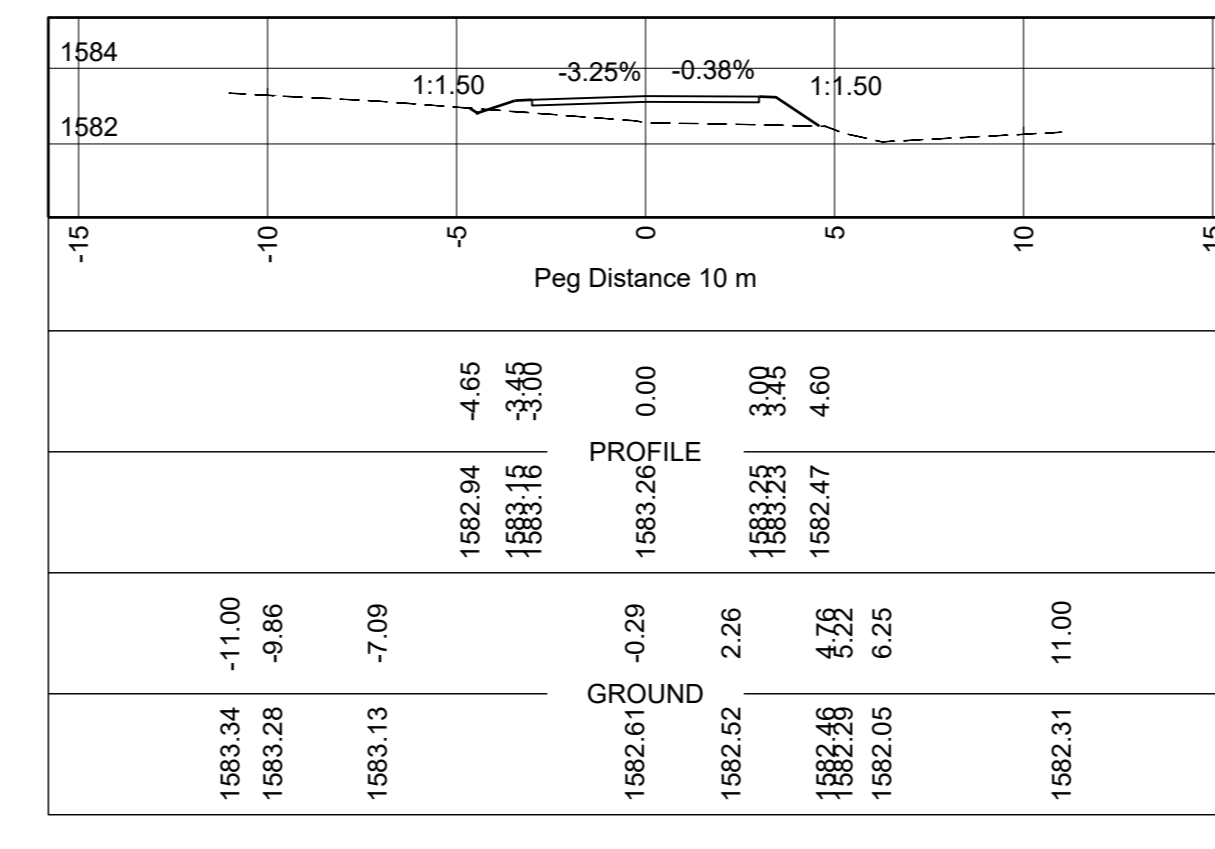
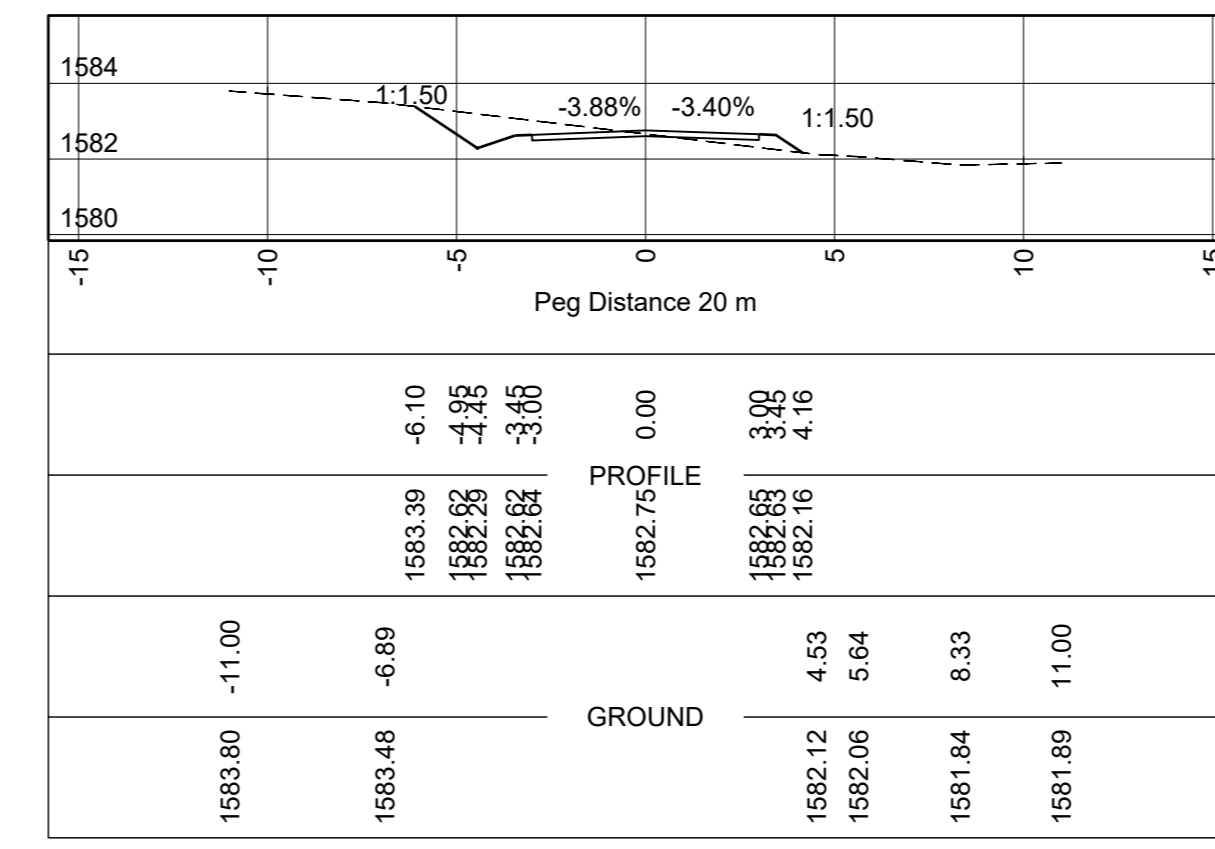
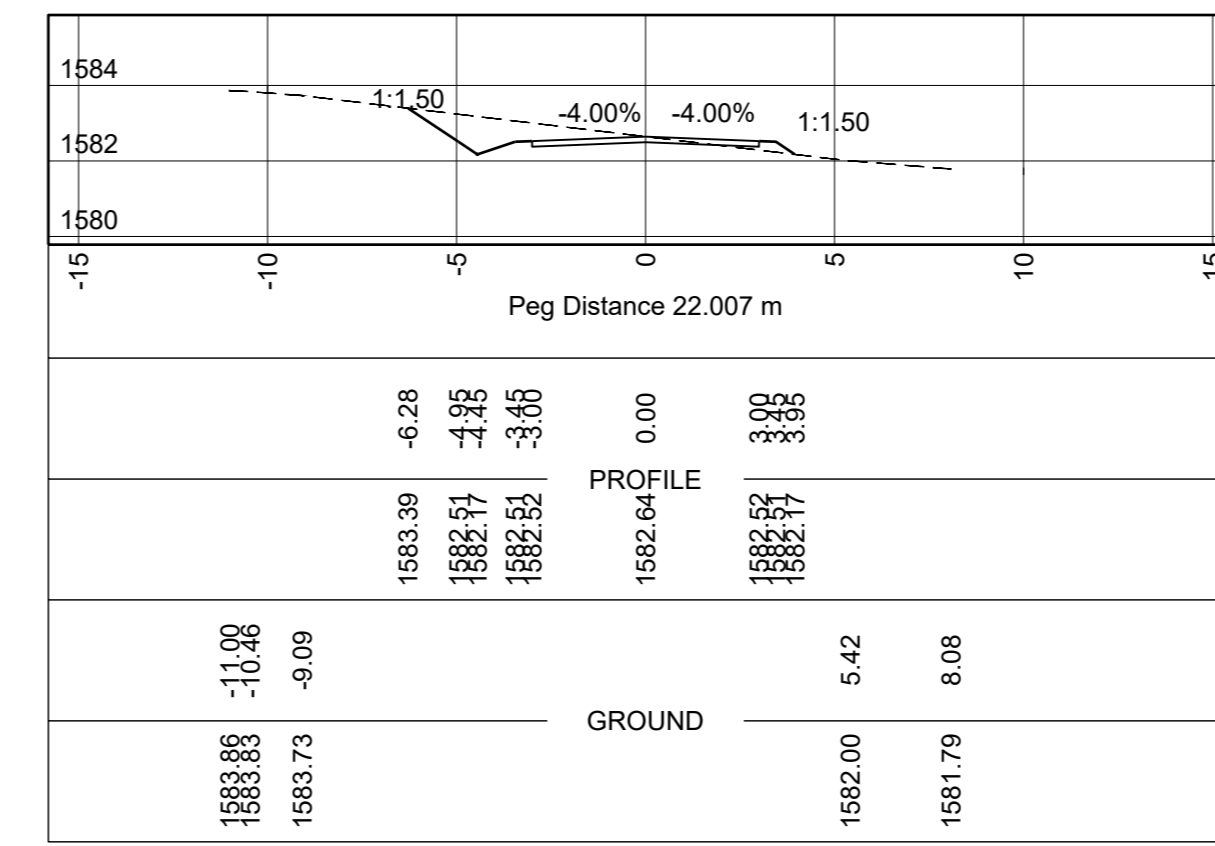
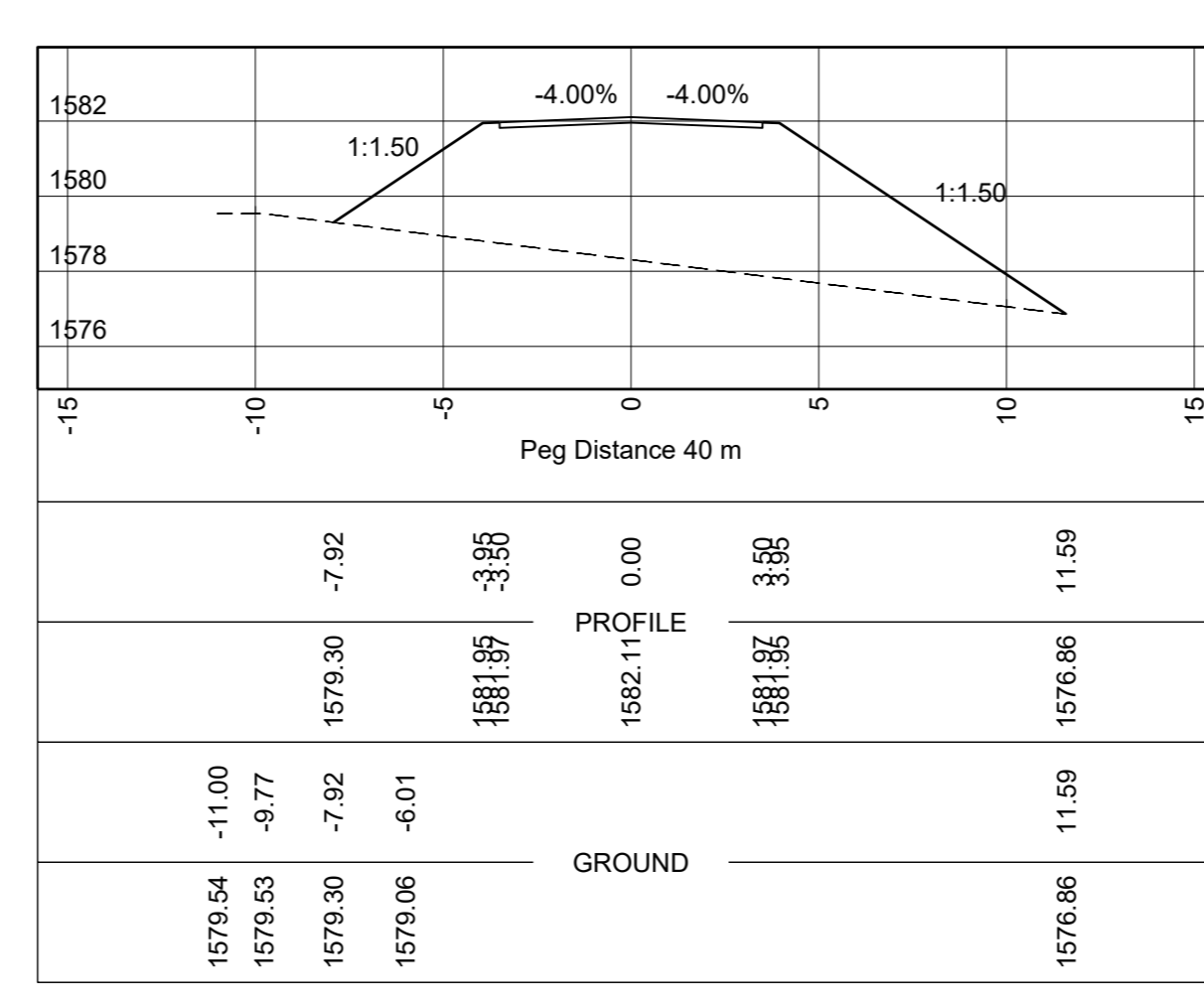
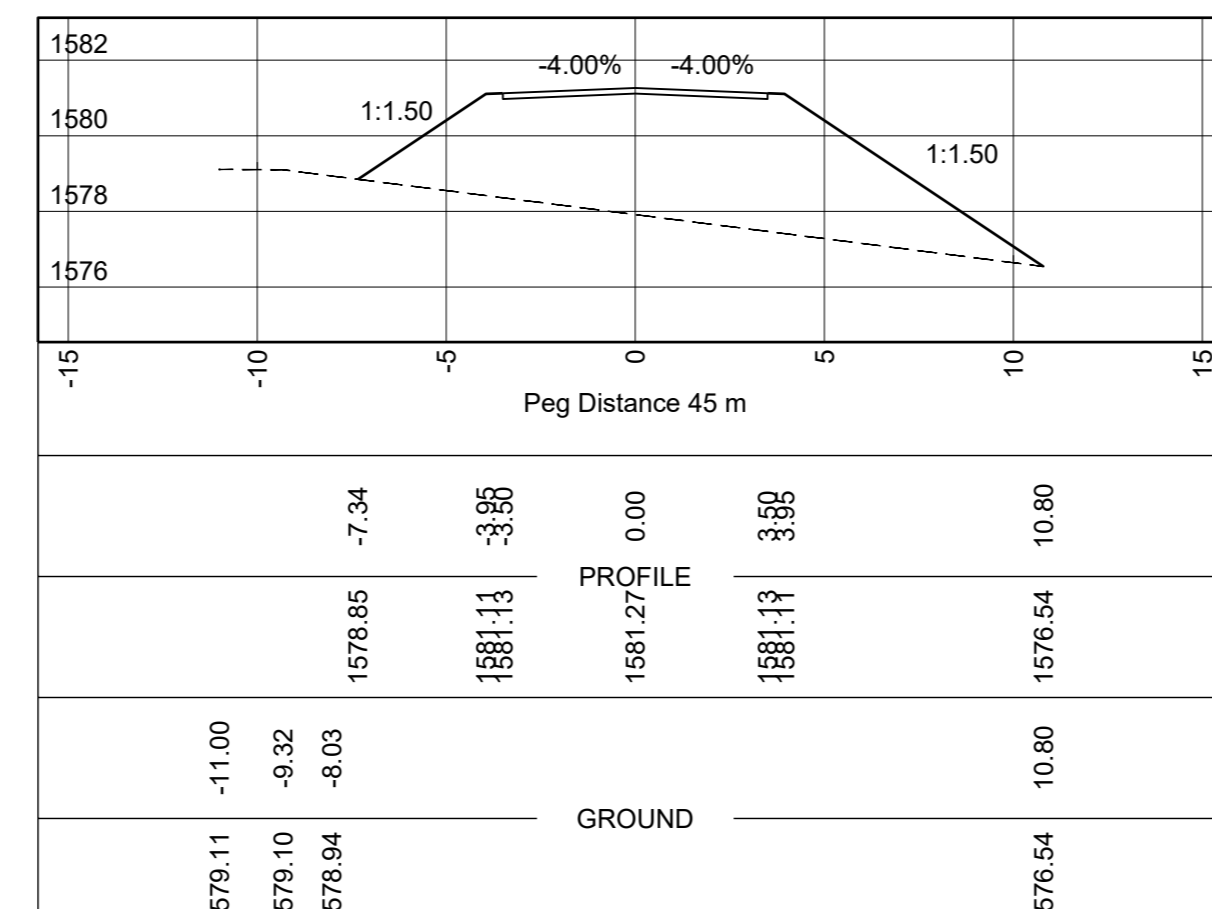
TRANSPORTATION ENGINEERING / CHEF ENGINEER

HEAD: TRANSPORT

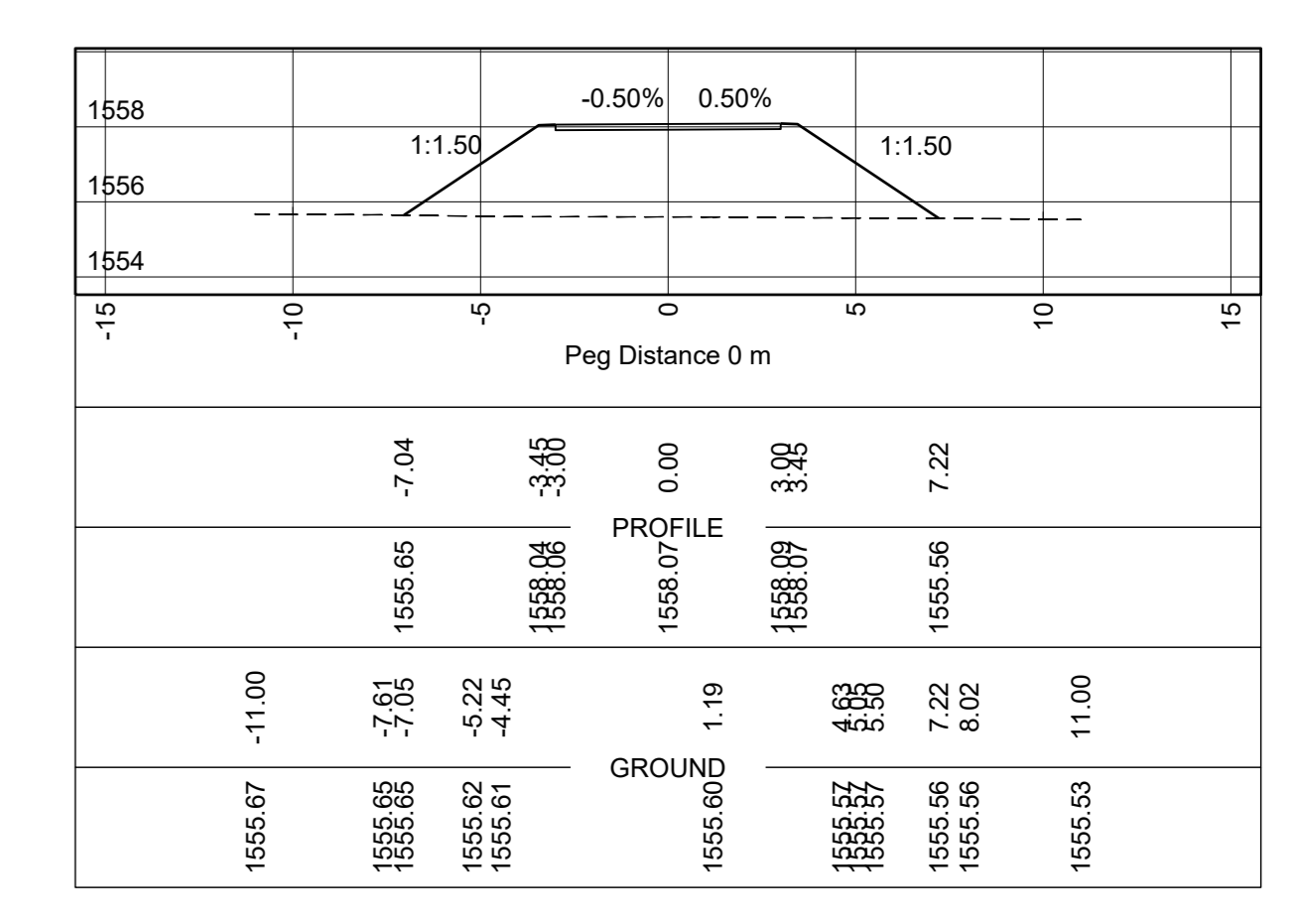
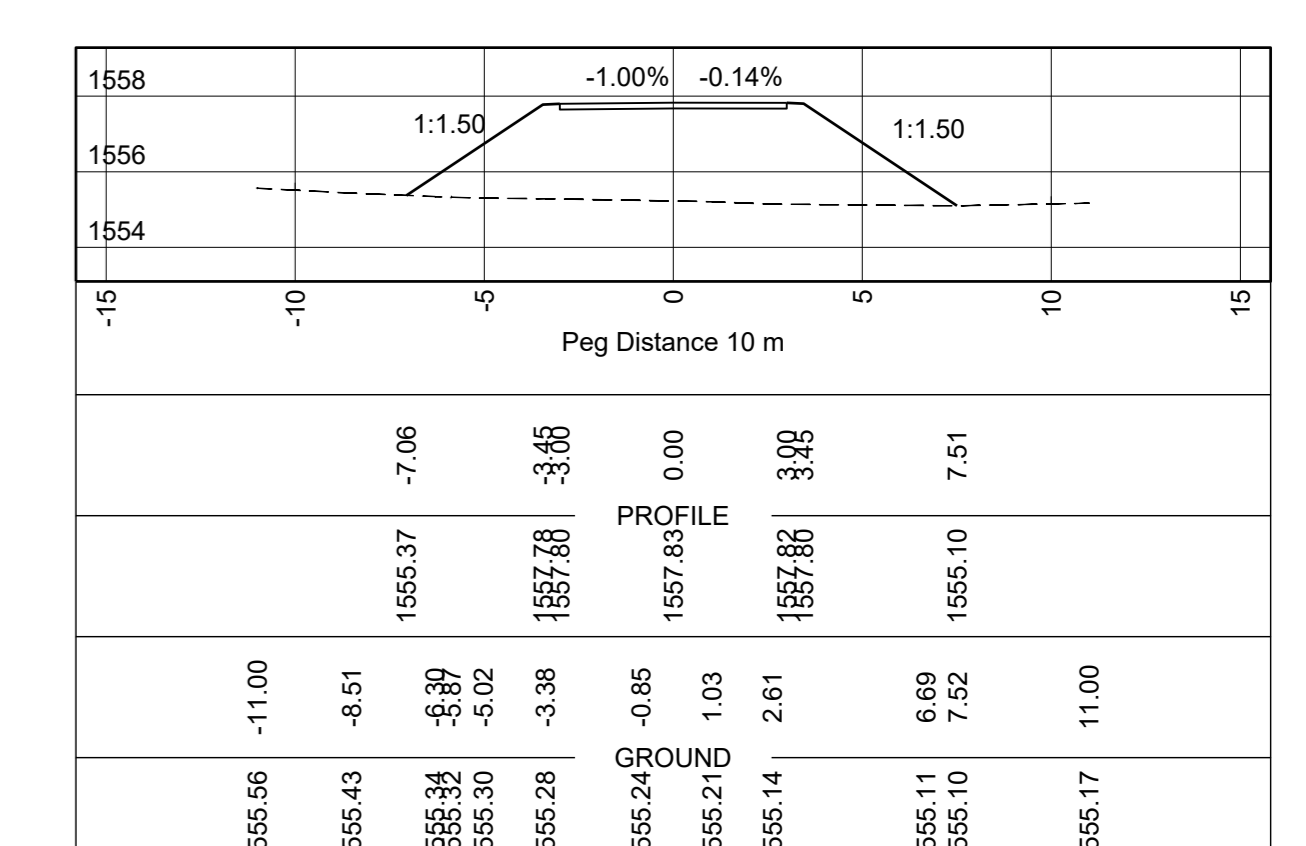
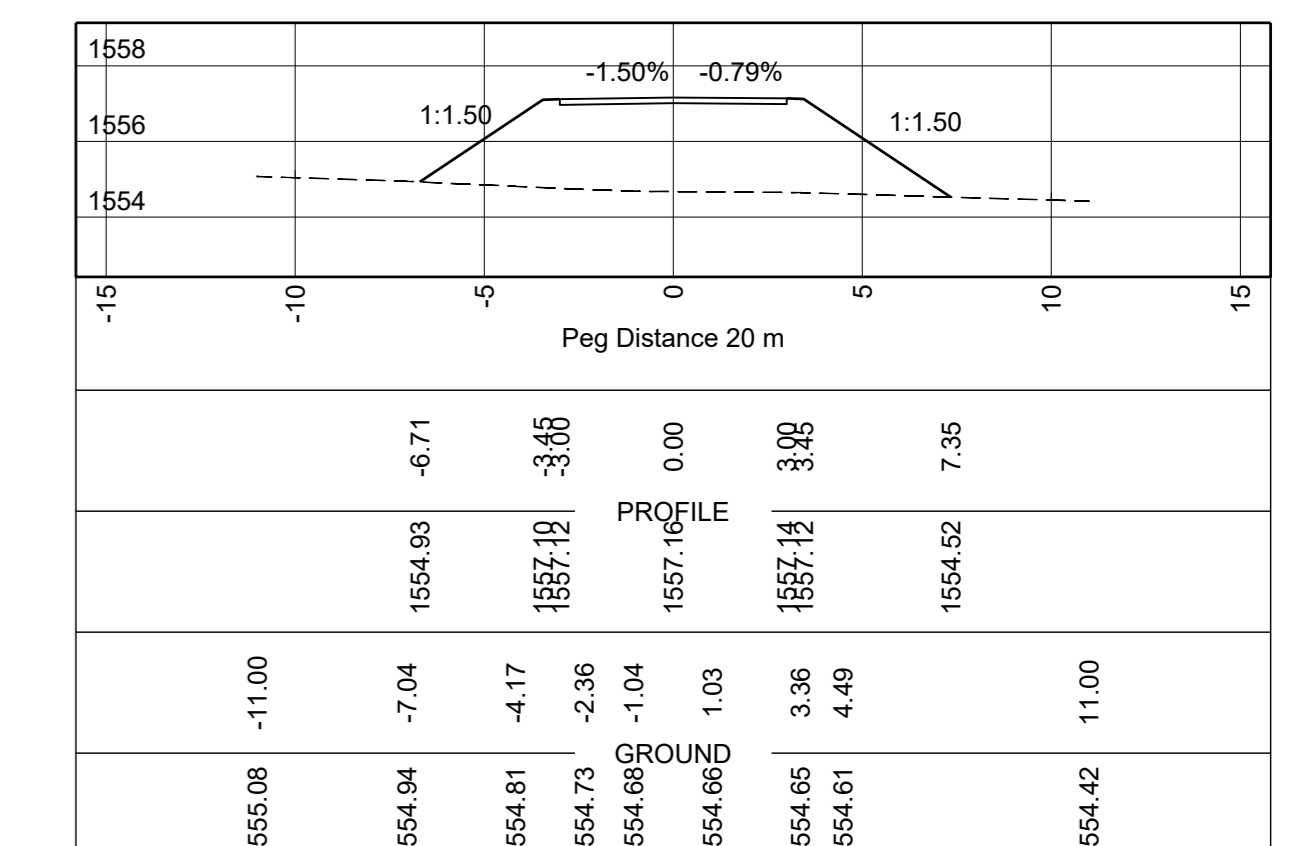
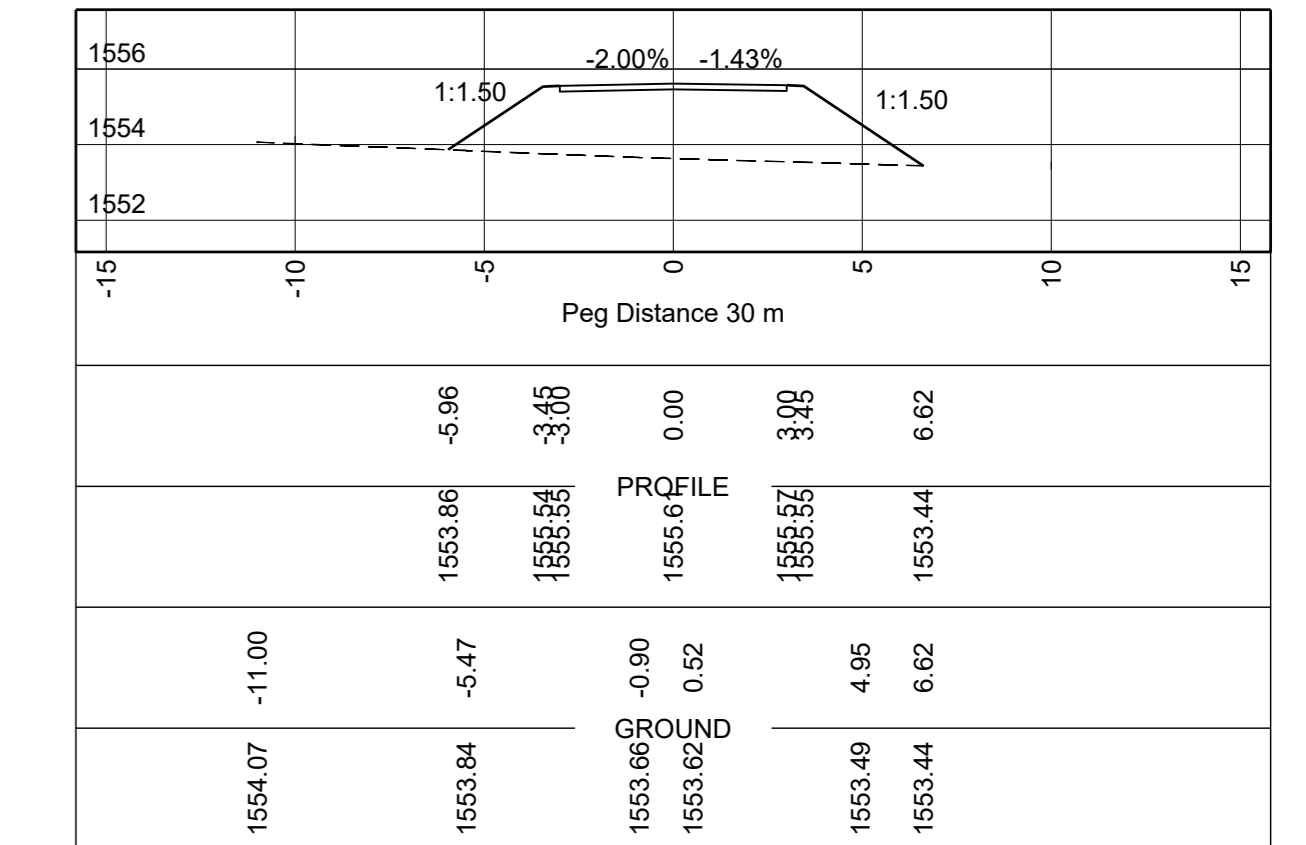
STAKED KM DISTANCE	AS SHOWN	SHEET 1 OF 1
SCALE	HOR 1:1000 VERT 1:100	PLAN No. C46109



TIE IN TO BE CONFIRMED DURING CONSTRUCTION BY ENGINEER



TIE IN TO BE CONFIRMED DURING CONSTRUCTION BY ENGINEER



SYMBOL	DATE	DESCRIPTION	CHECKED	SIGNED
AMENDMENTS				

**AS BUILT**

SUPERVISING ENGINEER \_\_\_\_\_ DATE \_\_\_\_\_

SUPERVISING AUTHORITY \_\_\_\_\_

CONTINUED FROM: -

DESIGNED BY: N. MAHOMED

CHECKED BY: S. NAIDOO

LONG SECTION NO: C 46112

DRAWN BY: B. FYNN

DESIGN PLAN NO: C 46052

CHECKED BY: S. NAIDOO

NAIDU CONSULTING - CONSULTING ENGINEER

K. GOVENDER SIGN: \_\_\_\_\_ DATE: \_\_\_\_\_

Designed by:

Naidu Consulting no.- D464/290/01



**transport**

Department: Transport

Province of KwaZulu-Natal

TRANSPORTATION ENGINEERING: CHIEF ENGINEER

HEAD: TRANSPORT

MAIN ROAD 165 (HOWICK - MOOI RIVER)

PORTION

UPGRADING PORTION OF P165: KM 38+295 TO KM 46+595

HOWICK TO MOOI RIVER

CROSS SECTIONS DESIGN FOR INTERSECTING/ ACCESS ROADS

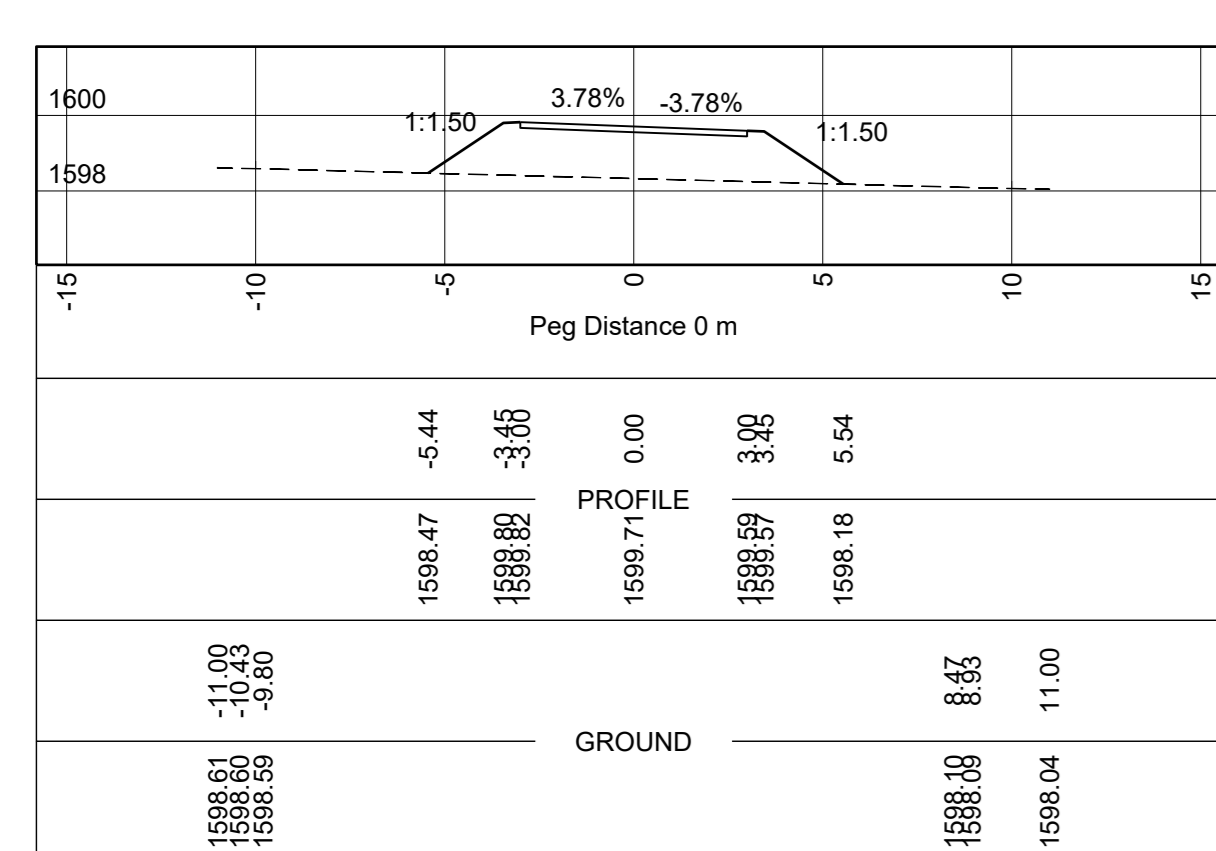
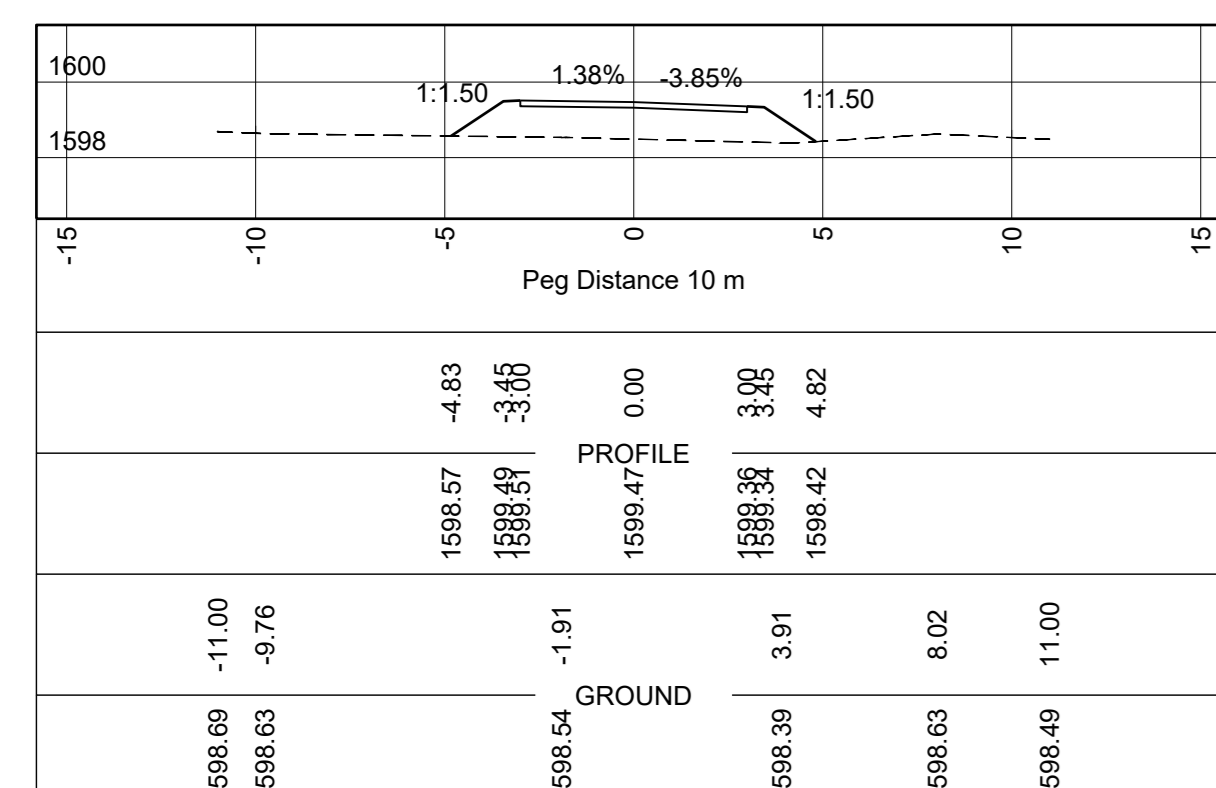
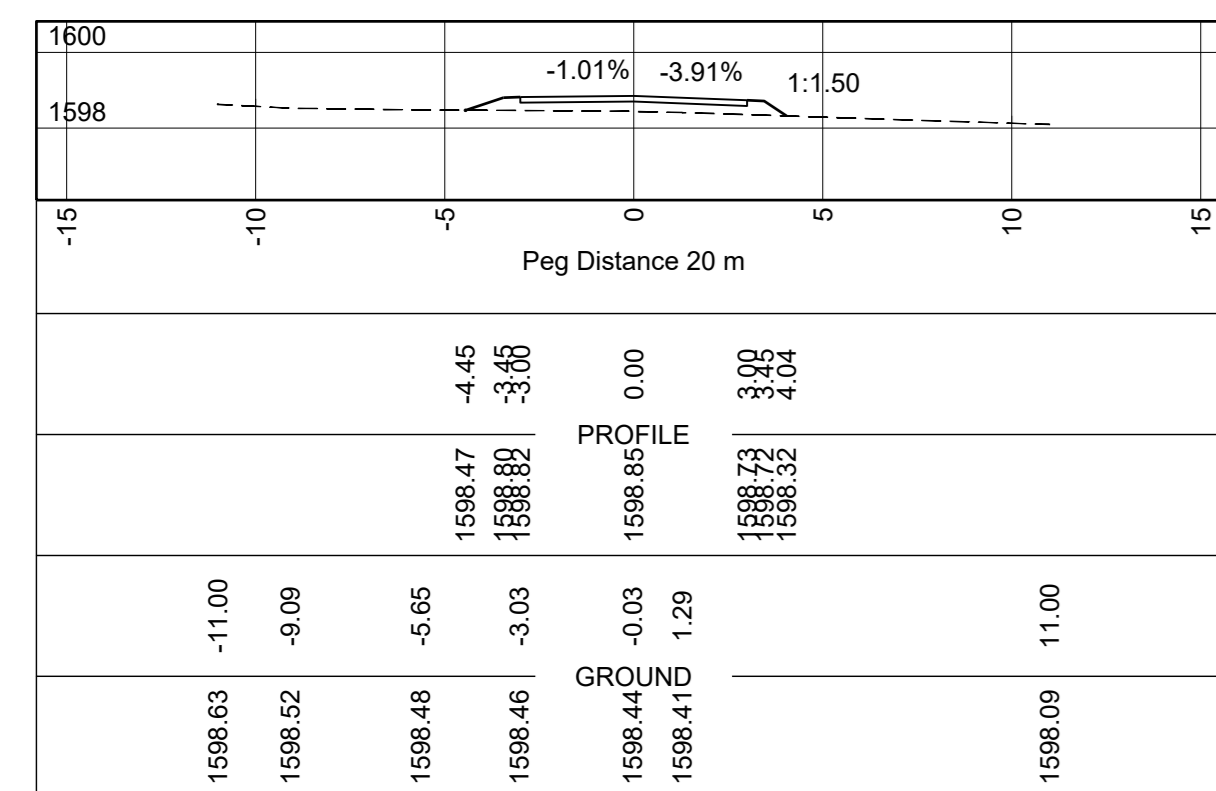
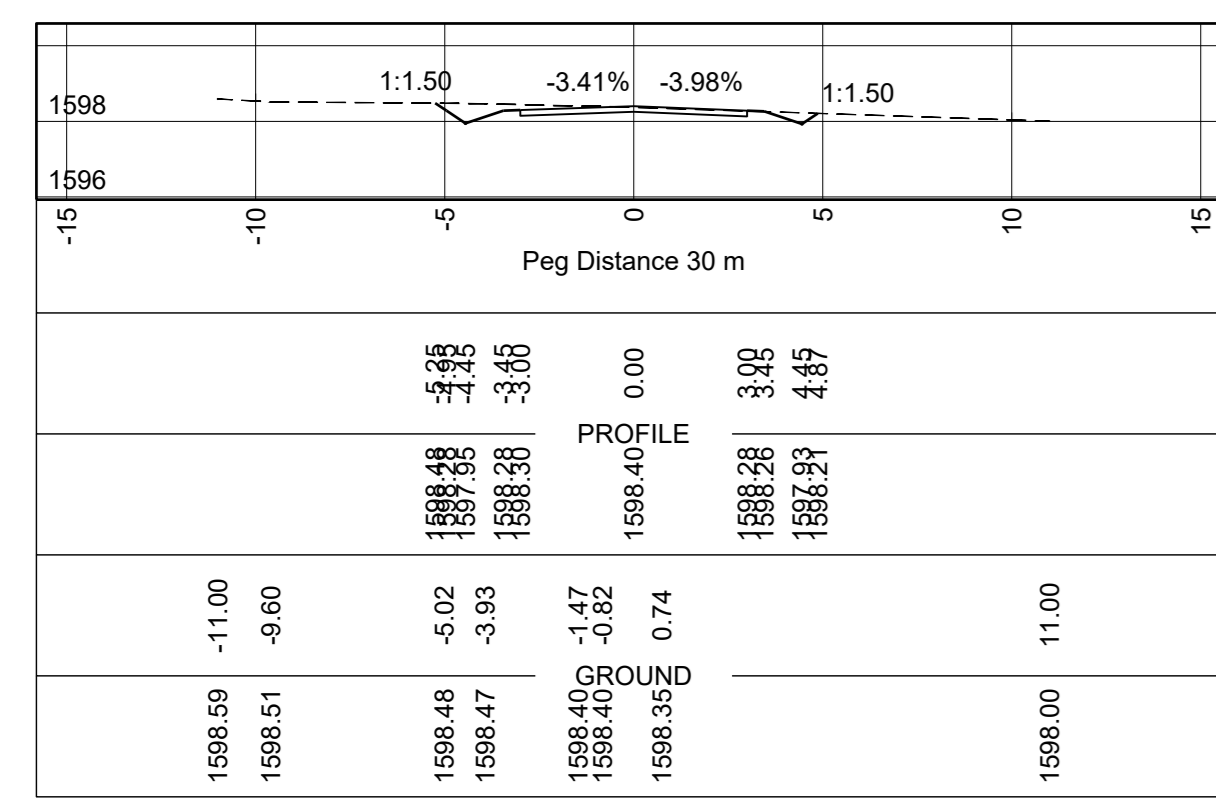
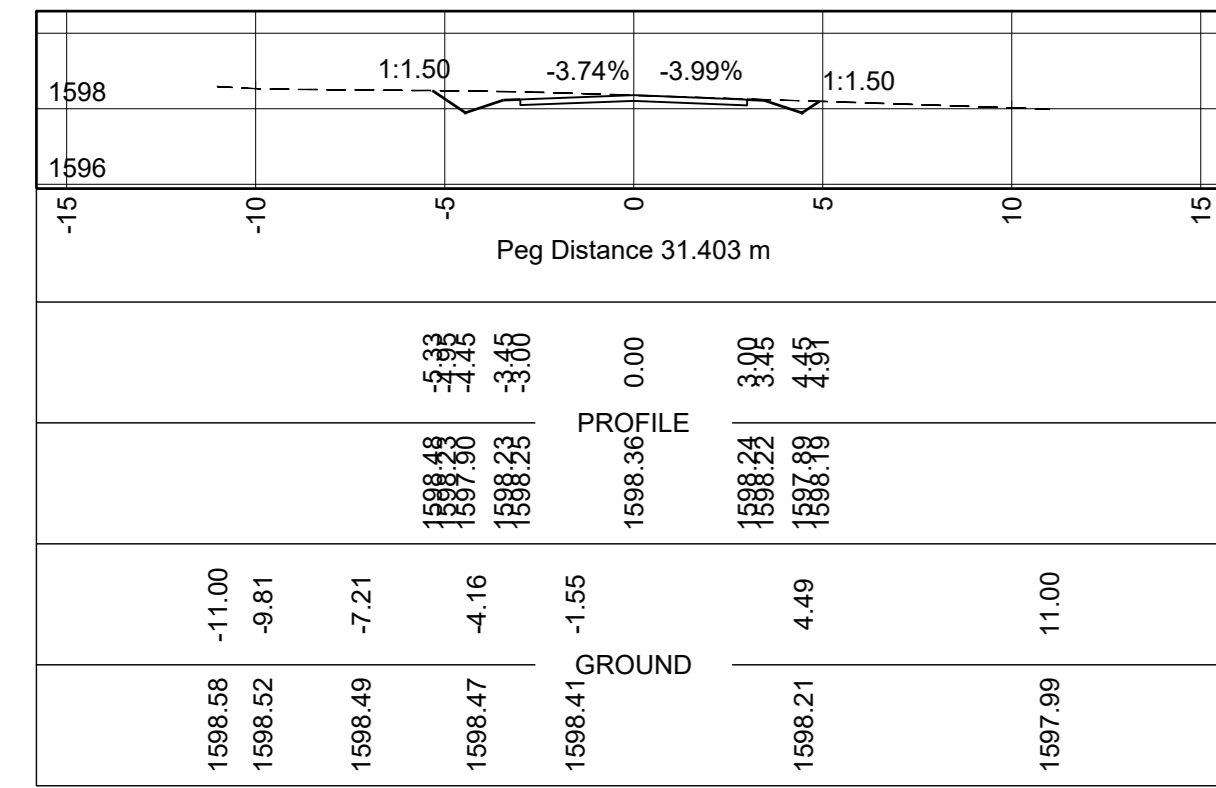
STAKED KM DISTANCE AS SHOWN

SCALE: HOR 1:200, VERT 1:200

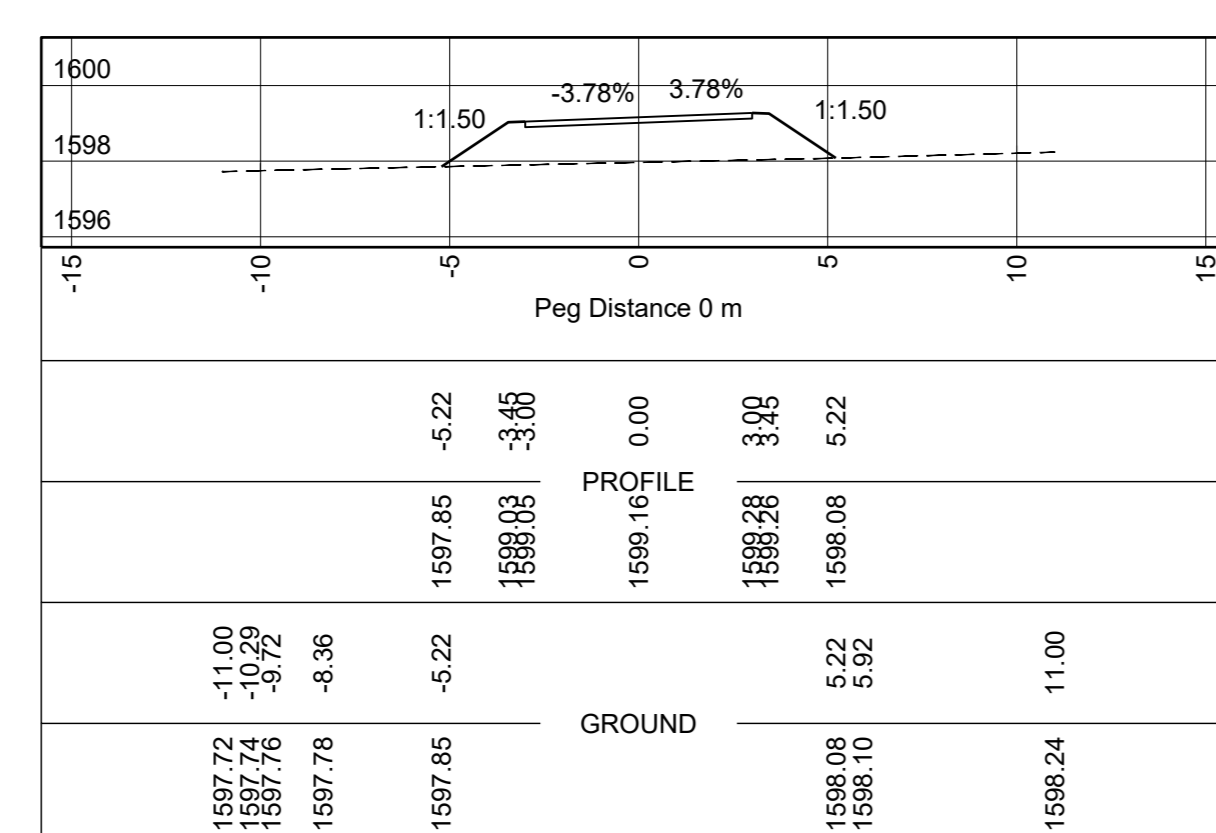
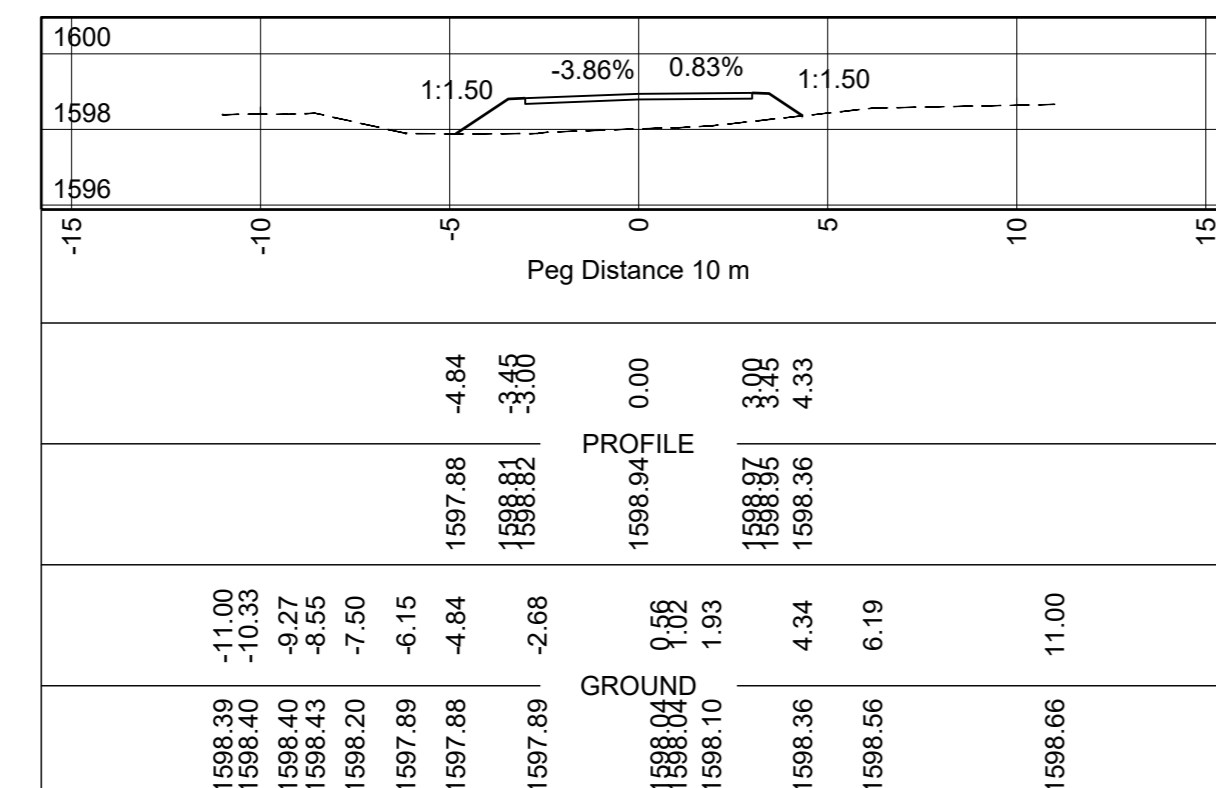
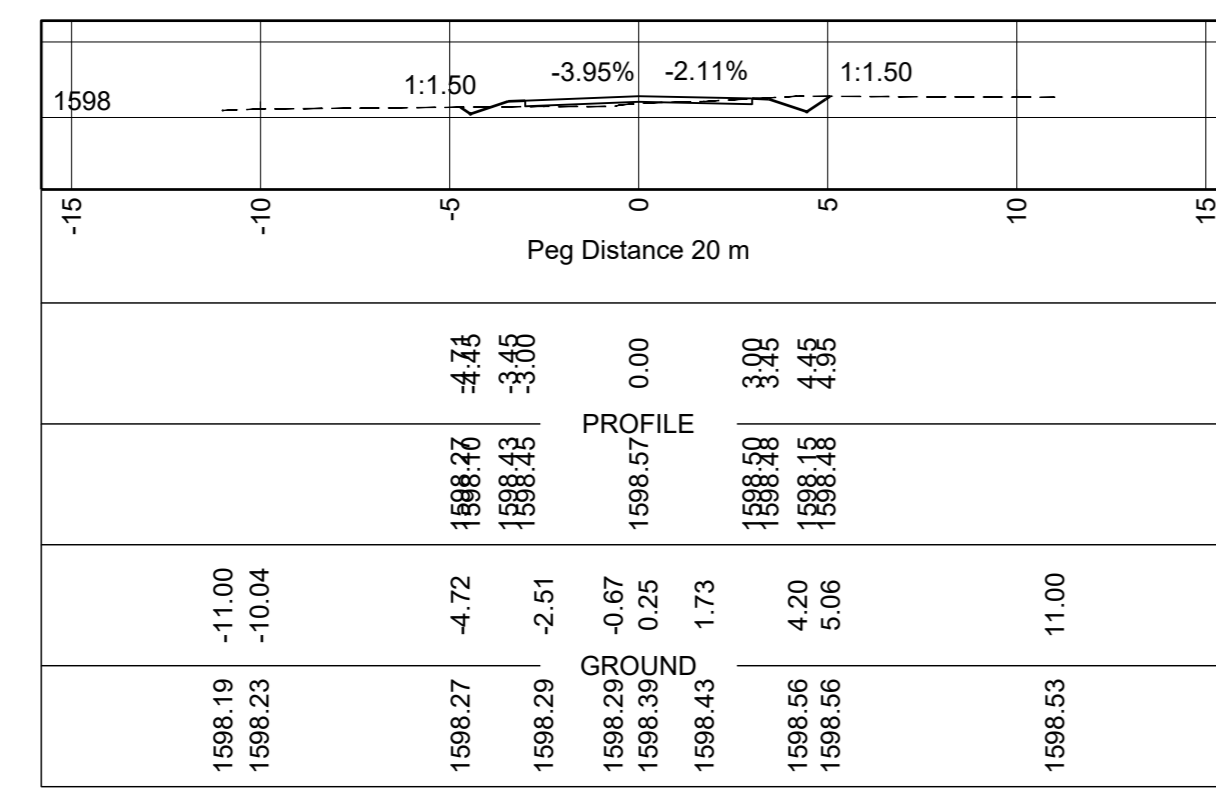
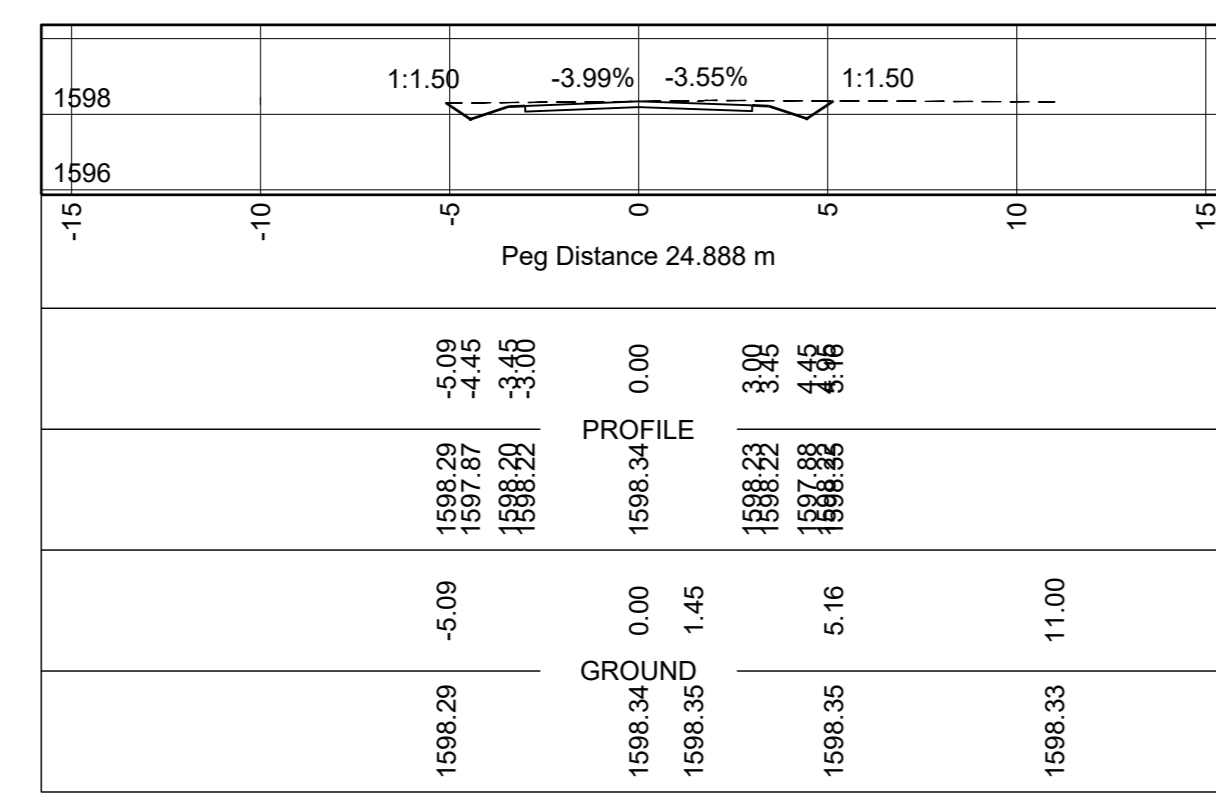
SHEET 1 OF 3

PLAN NO: C46111

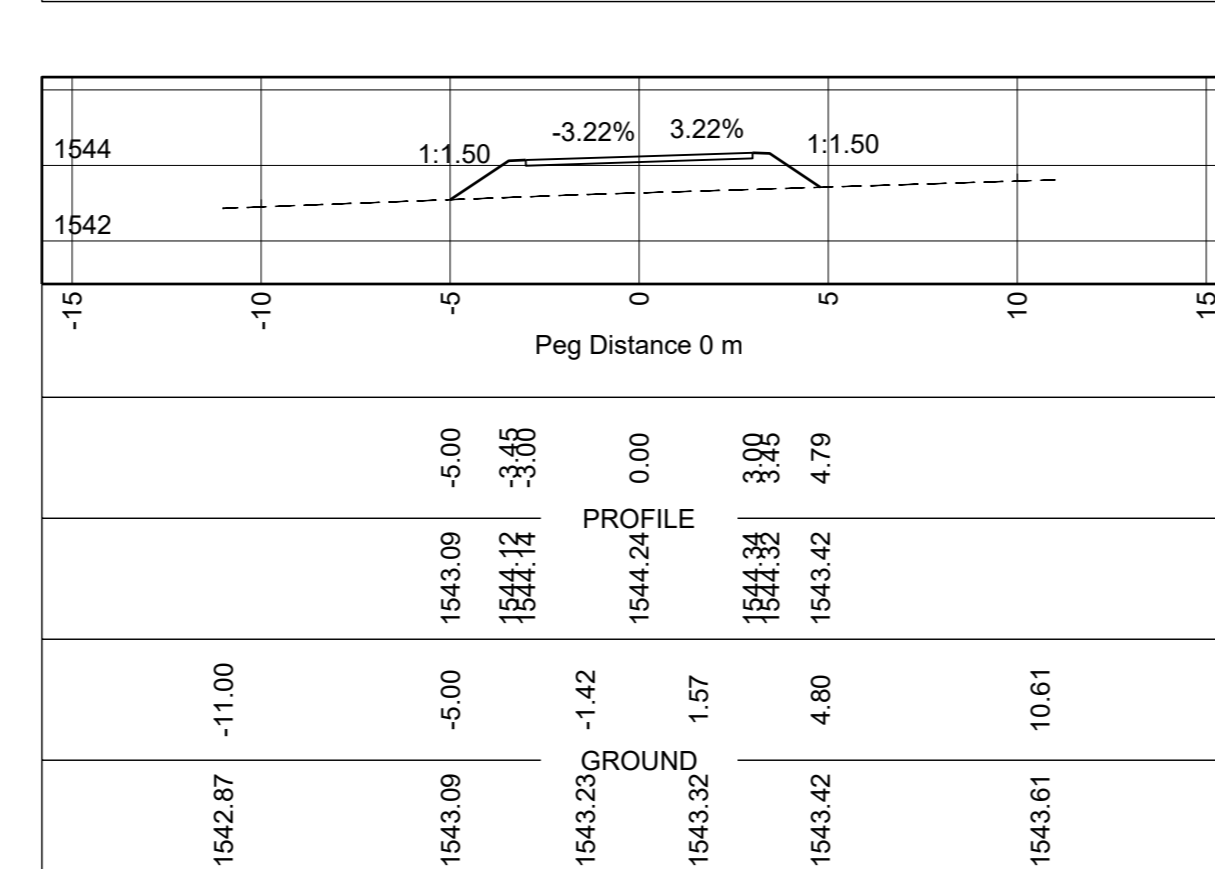
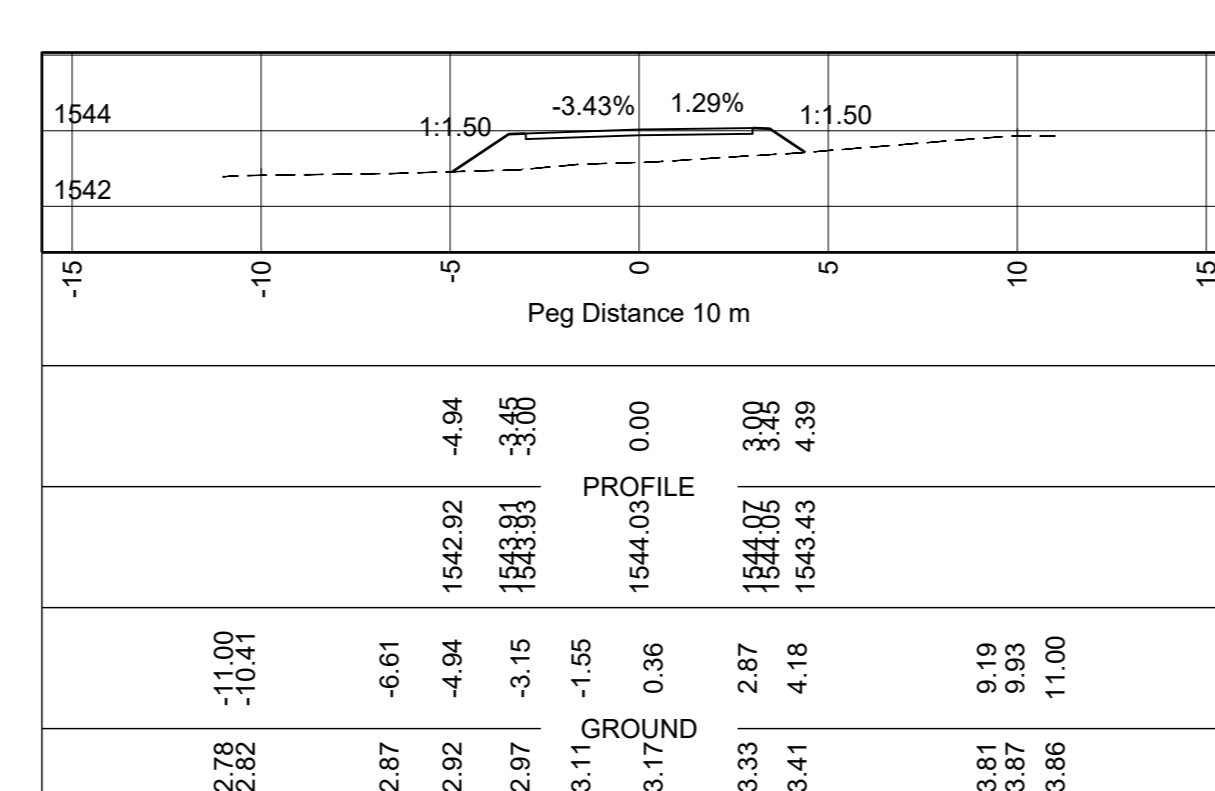
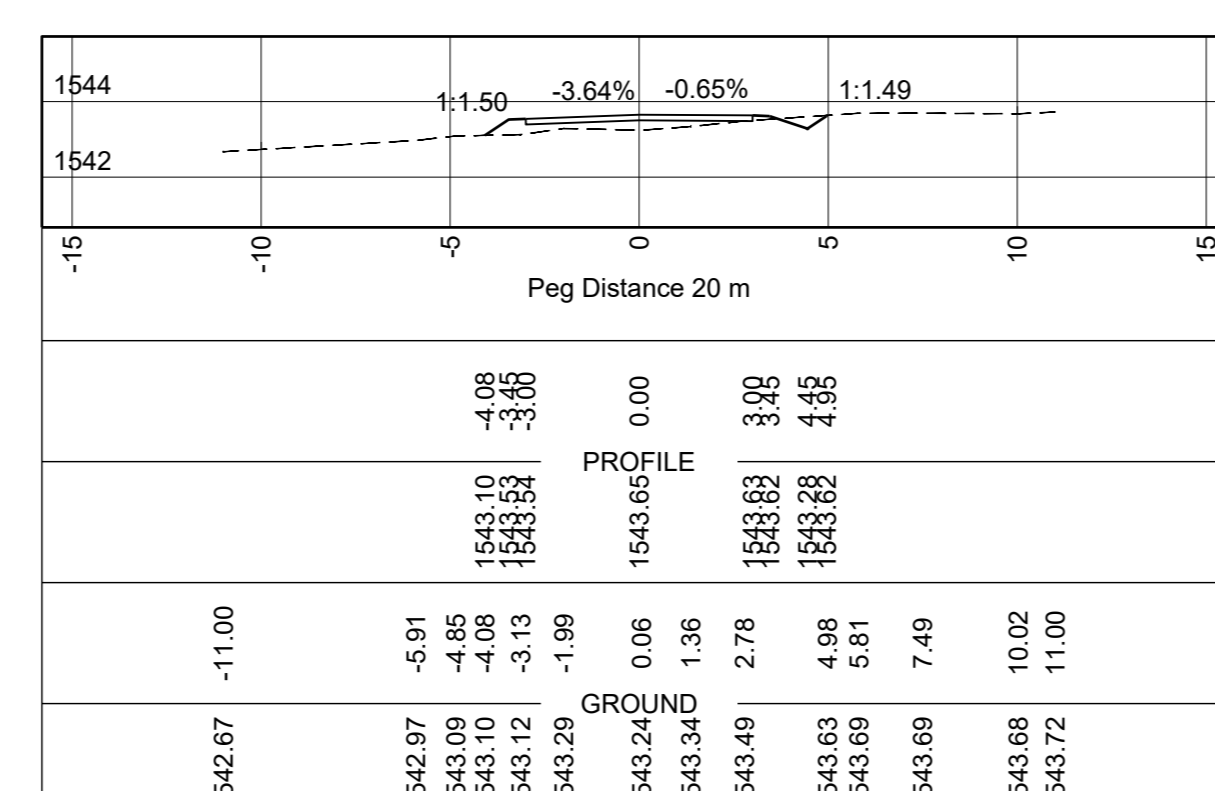
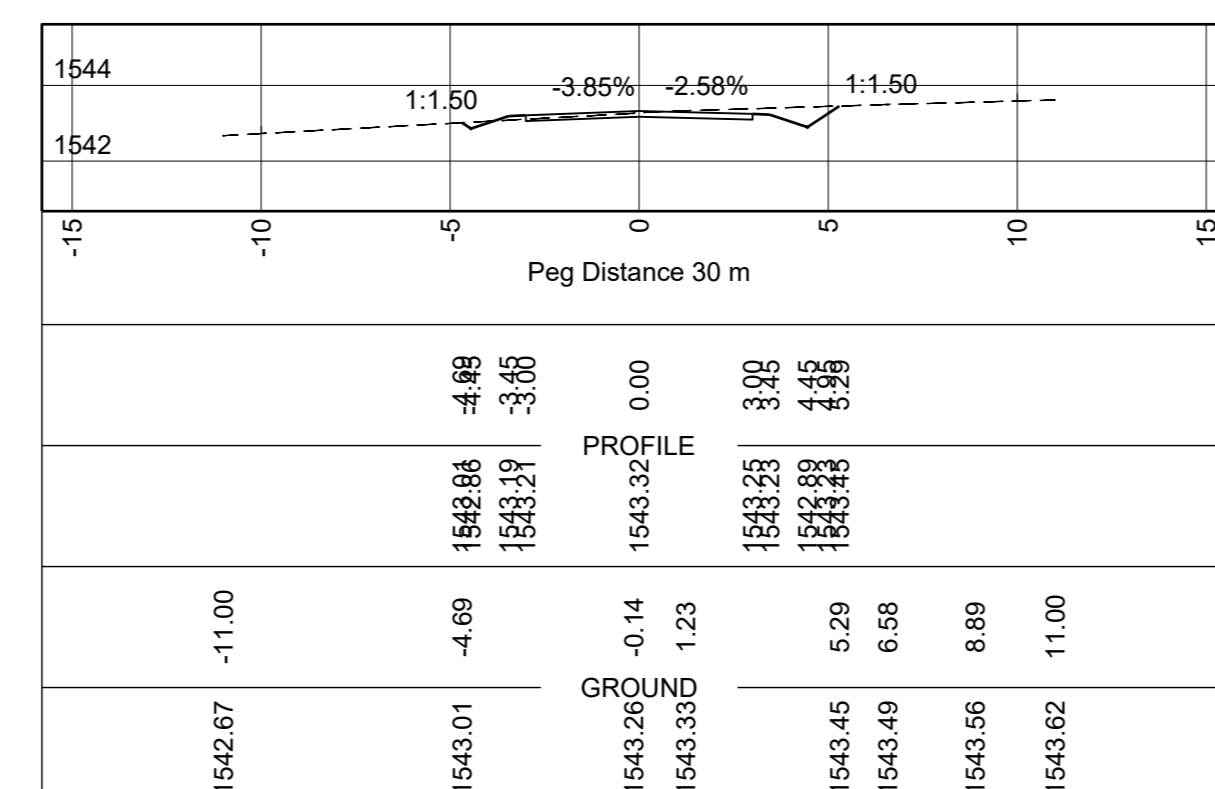
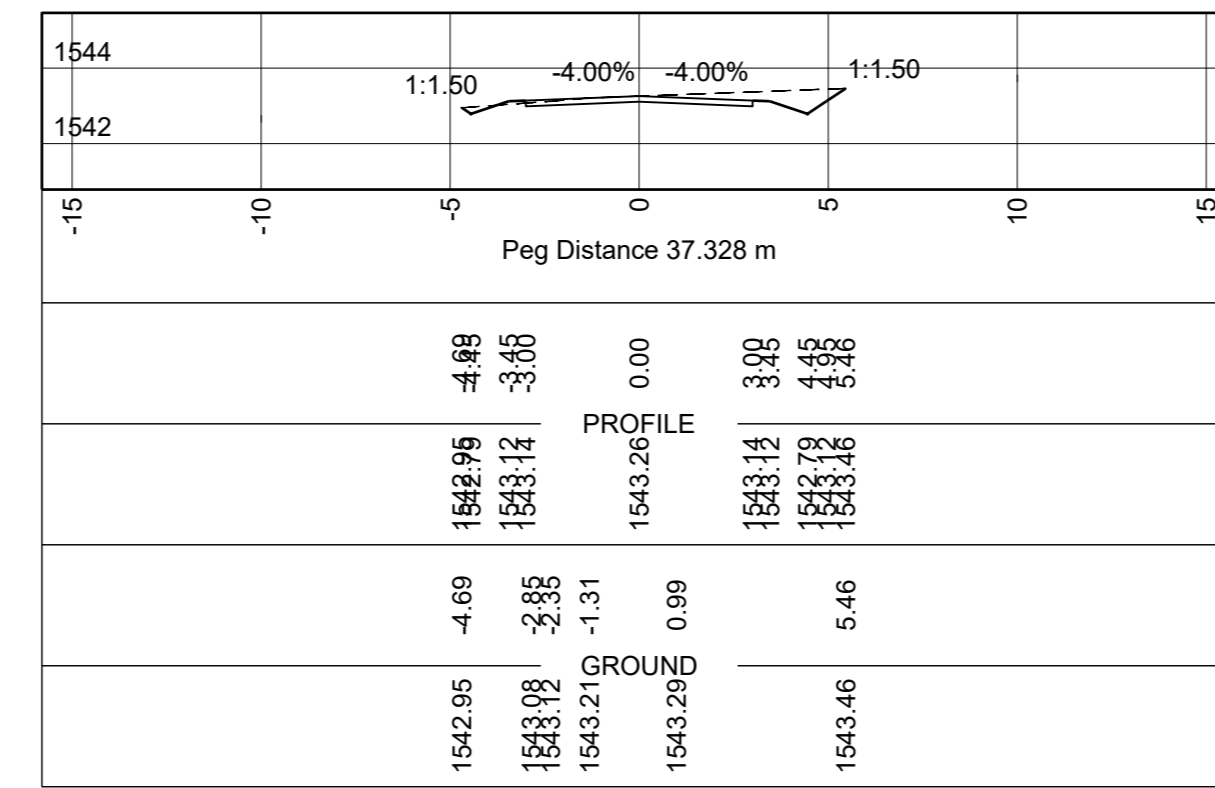
ACCESS 42+901 LHS



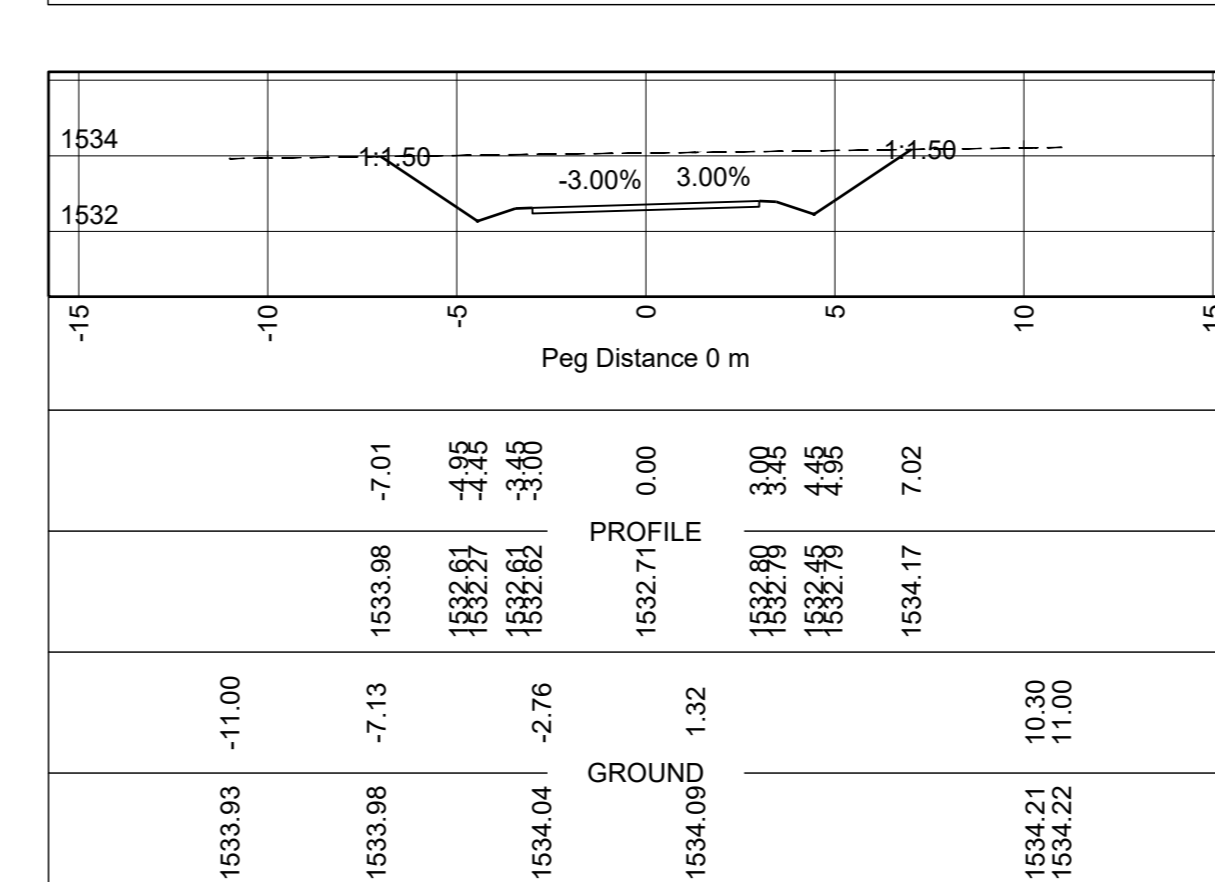
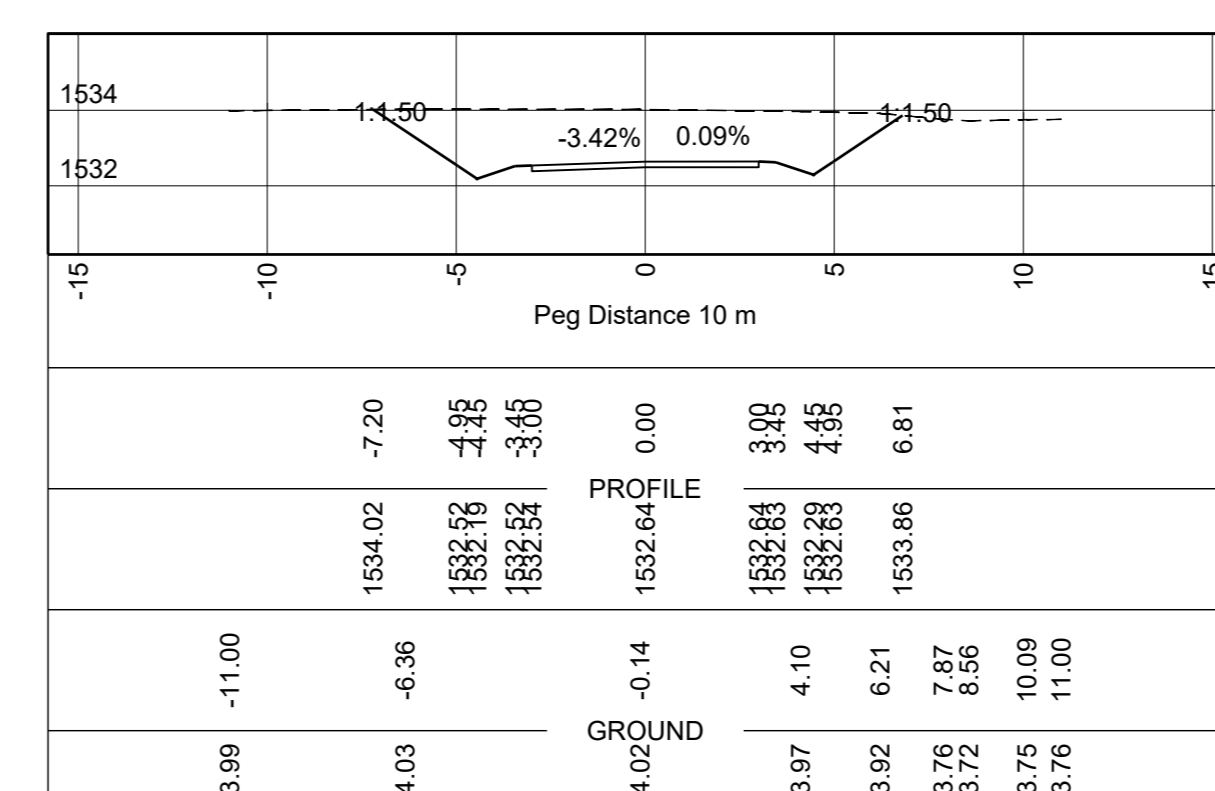
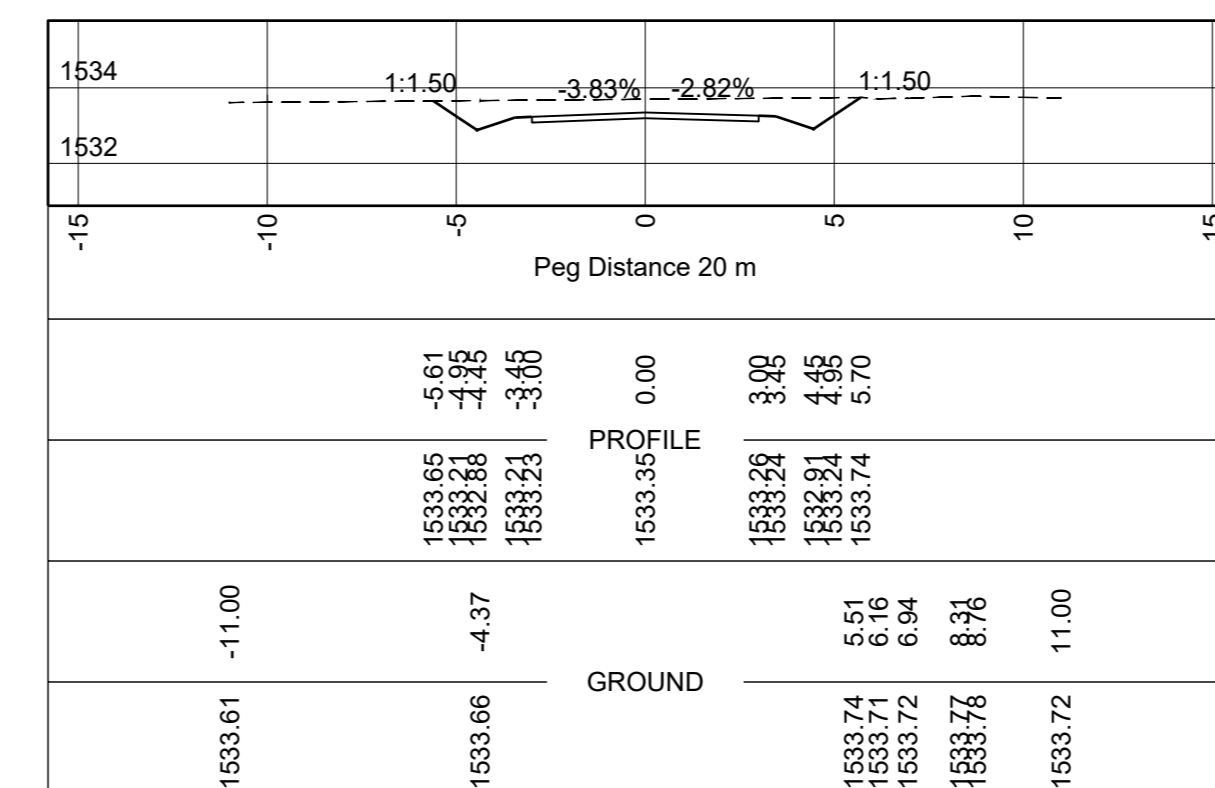
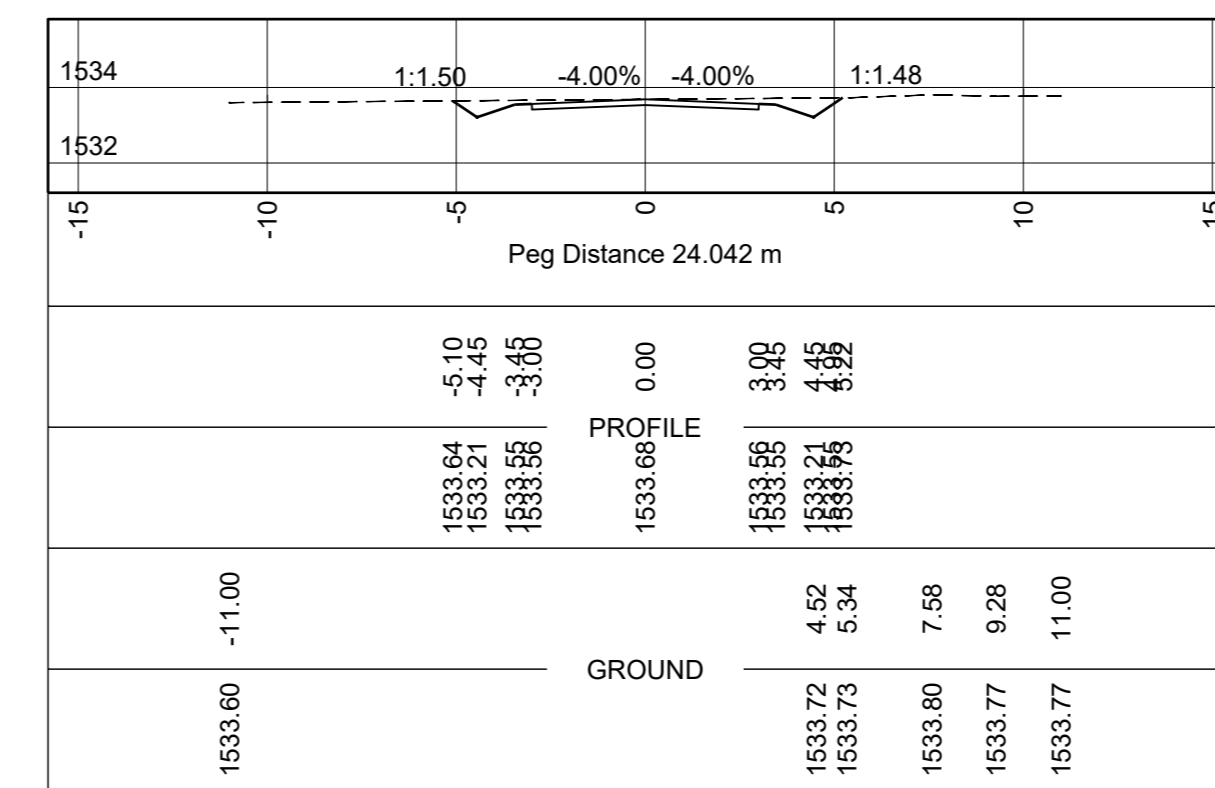
ACCESS 42+915 RHS



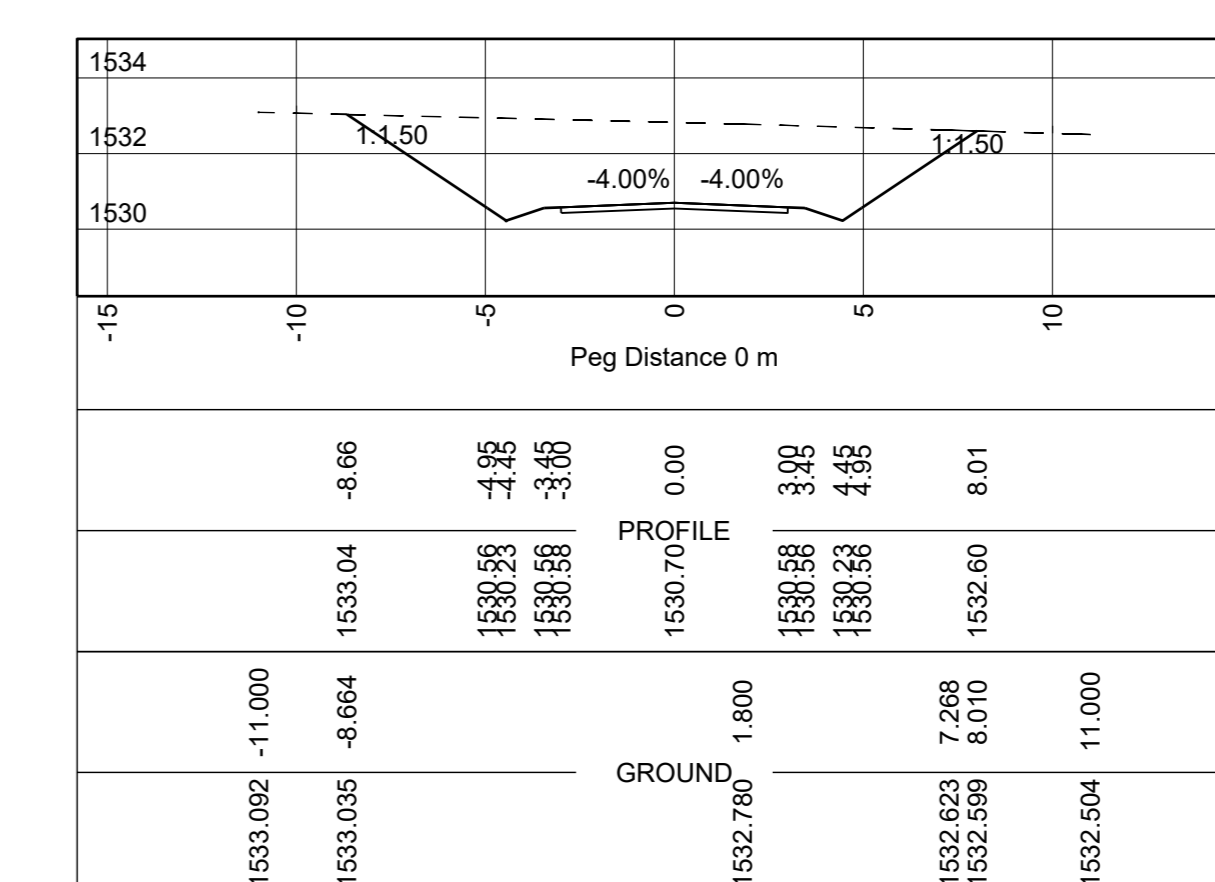
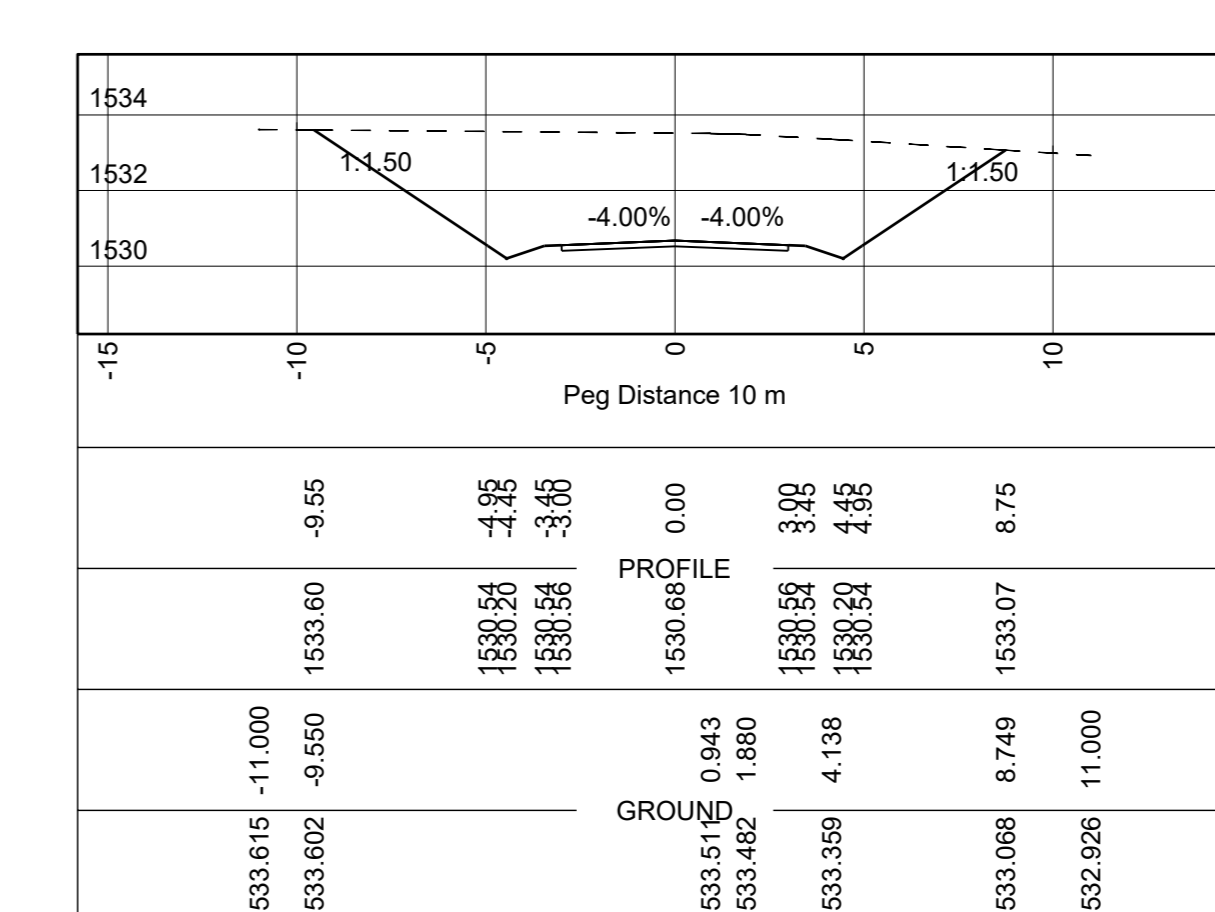
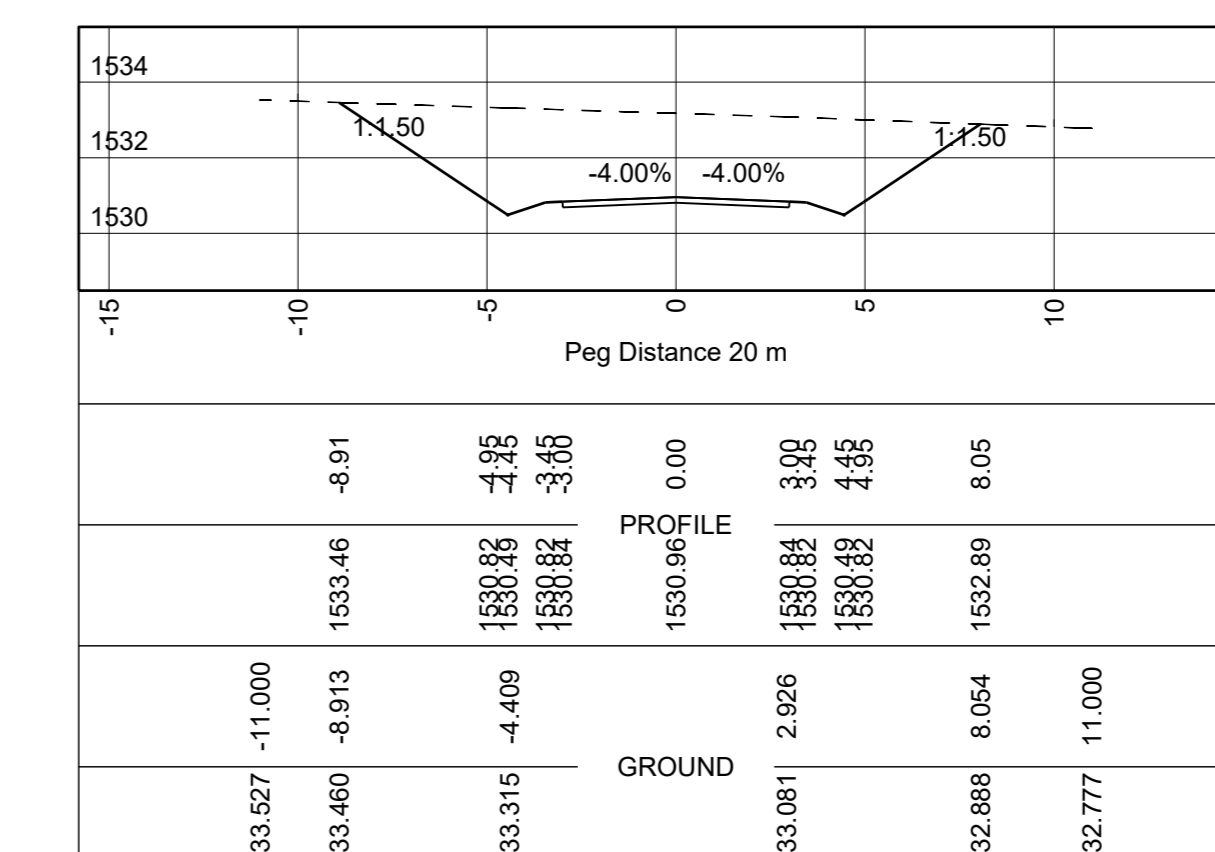
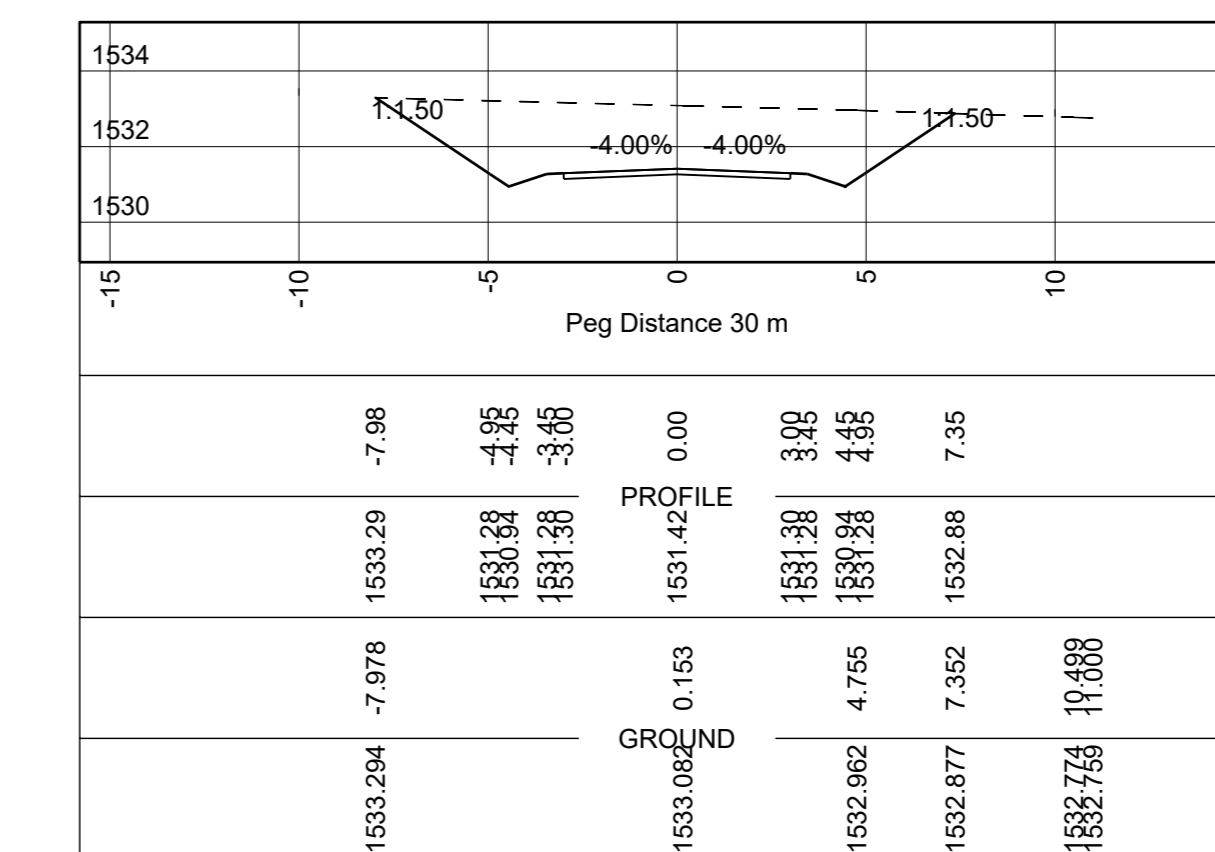
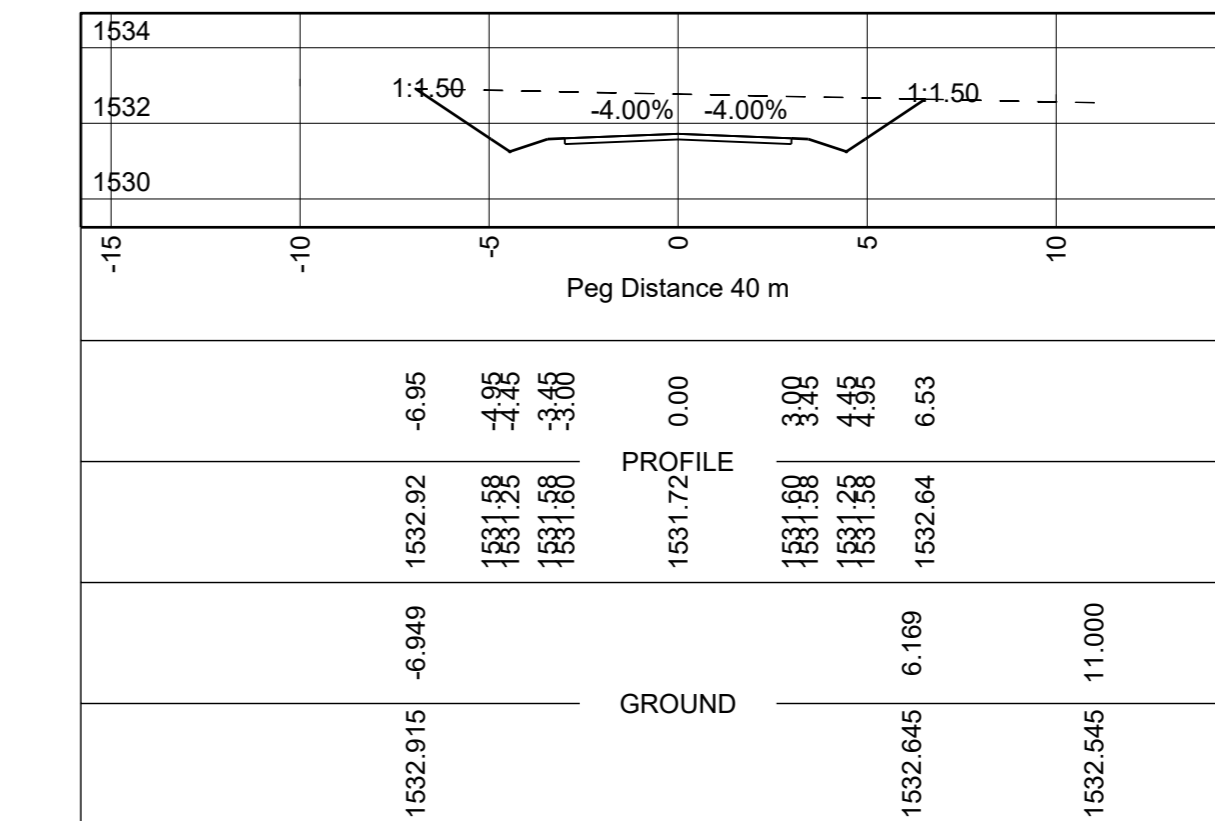
ACCESS 44+385 RHS



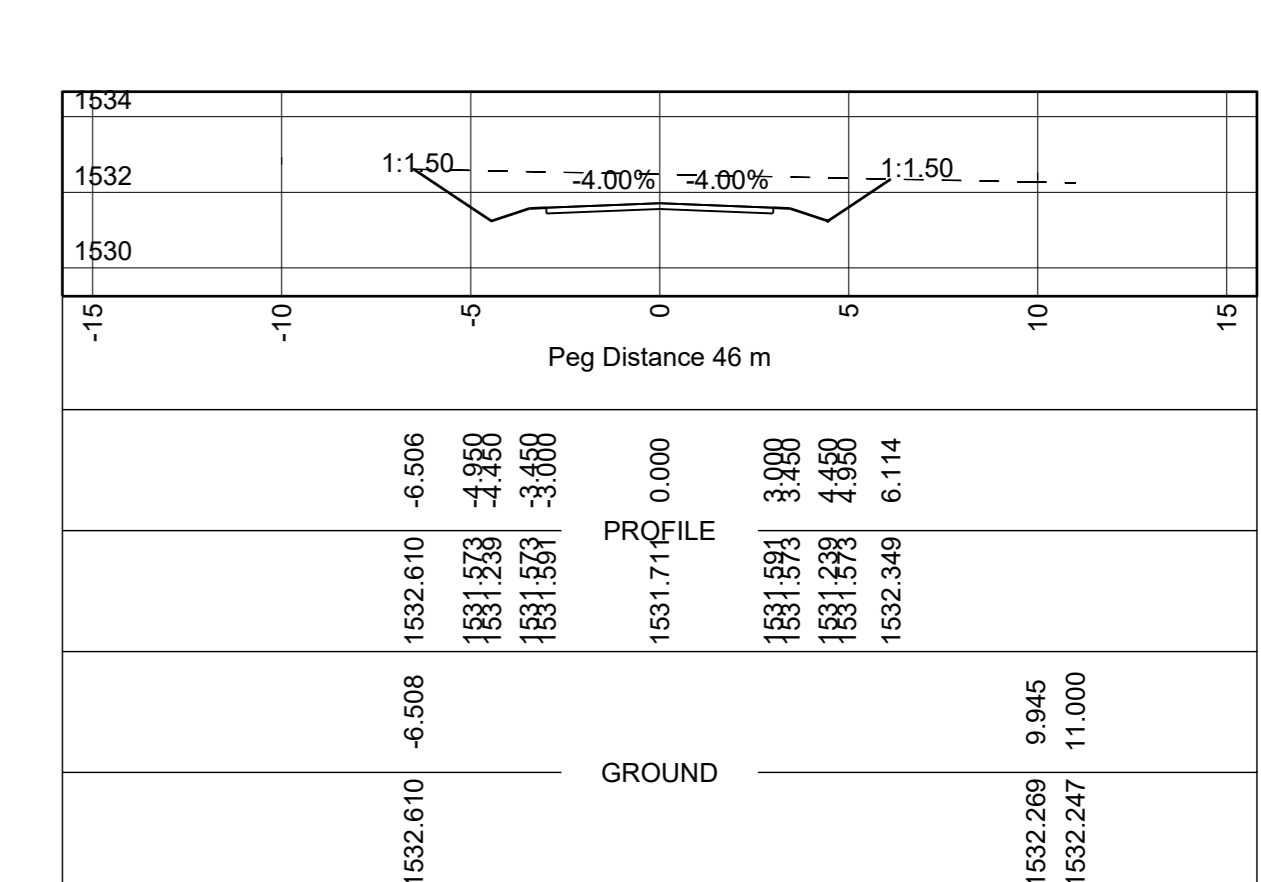
ACCESS 44+743 RHS



ACCESS 44+805 LHS



TIE IN TO BE CONFIRMED DURING CONSTRUCTION BY ENGINEER



SYMBOL	DATE	DESCRIPTION	CHECKED	SIGNED
AMENDMENTS				

<b>AS BUILT</b>	CONTINUED FROM: C 46111	DESIGNED BY: N. MAHOMED
SUPERVISING ENGINEER	CONTINUED ON: C 46113	CHECKED BY: S. NAIDOO
DATE	LONG SECTION NO: C 46109	DRAWN BY: M. FYNN
SUPERVISING AUTHORITY	DESIGN PLAN NO: C 46052	CHECKED BY: S. NAIDOO
	NAIDU CONSULTING - CONSULTING ENGINEER	
	K. GOVENDER	SIGN: DATE

Designed by:

**NAIDU CONSULTING**

Naidu Consulting no.- D464/2902/01

**transport**

Department: Transport

Province of KwaZulu-Natal

TRANSPORTATION ENGINEERING: CHIEF ENGINEER

HEAD: TRANSPORT

MAIN ROAD 165 (HOWICK - MOOI RIVER)

PORTION

UPGRADING PORTION OF P165 : KM 38+295 TO KM 46+595

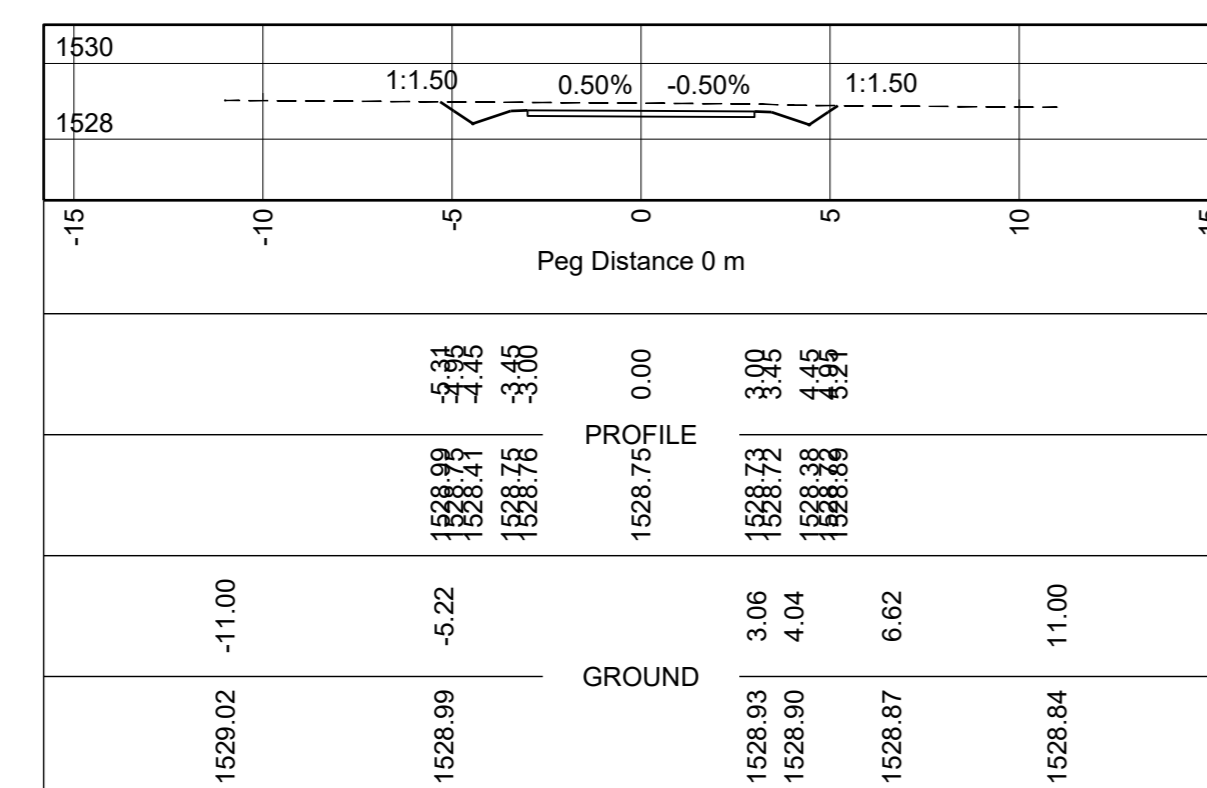
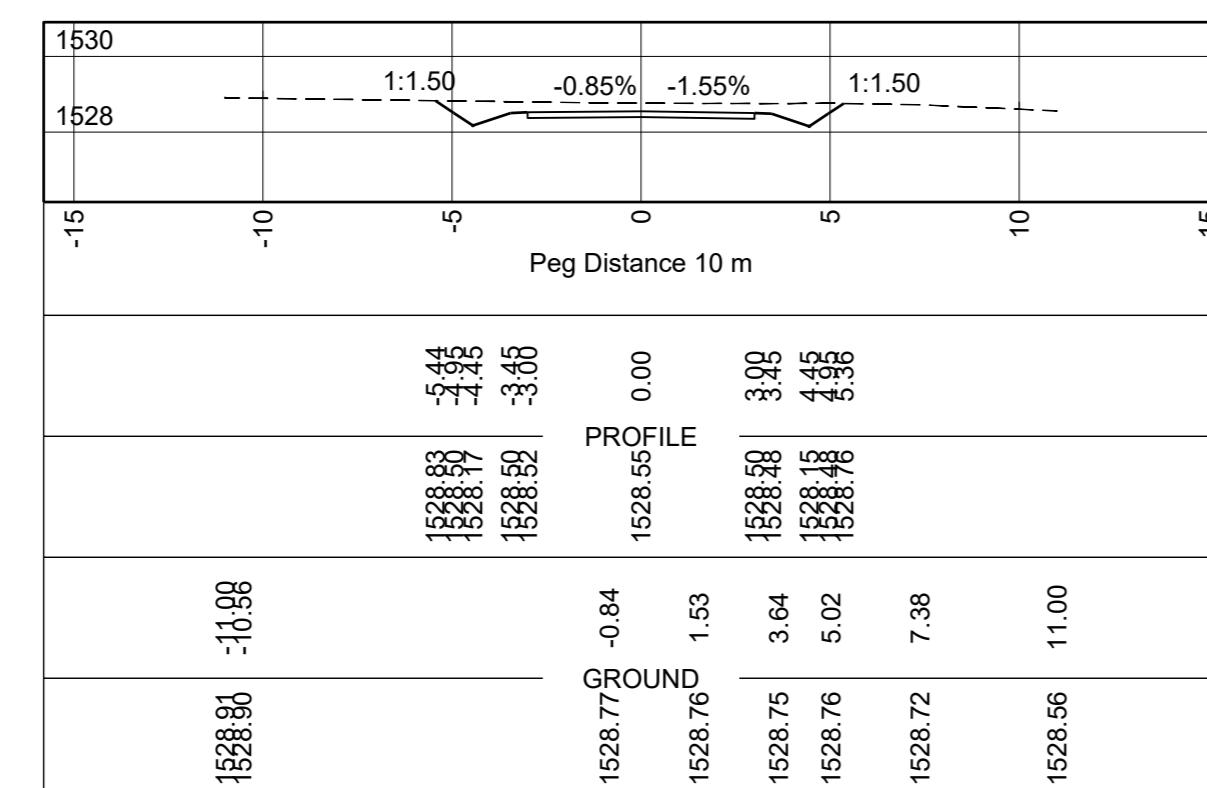
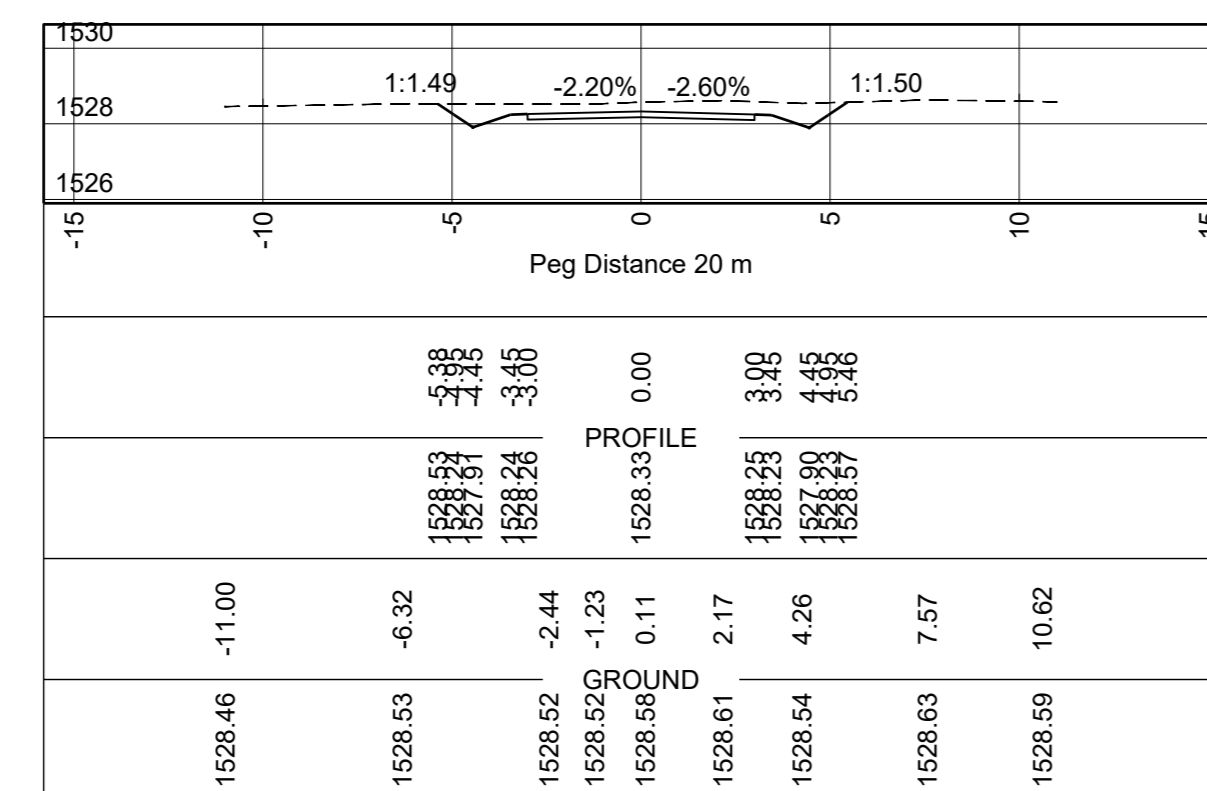
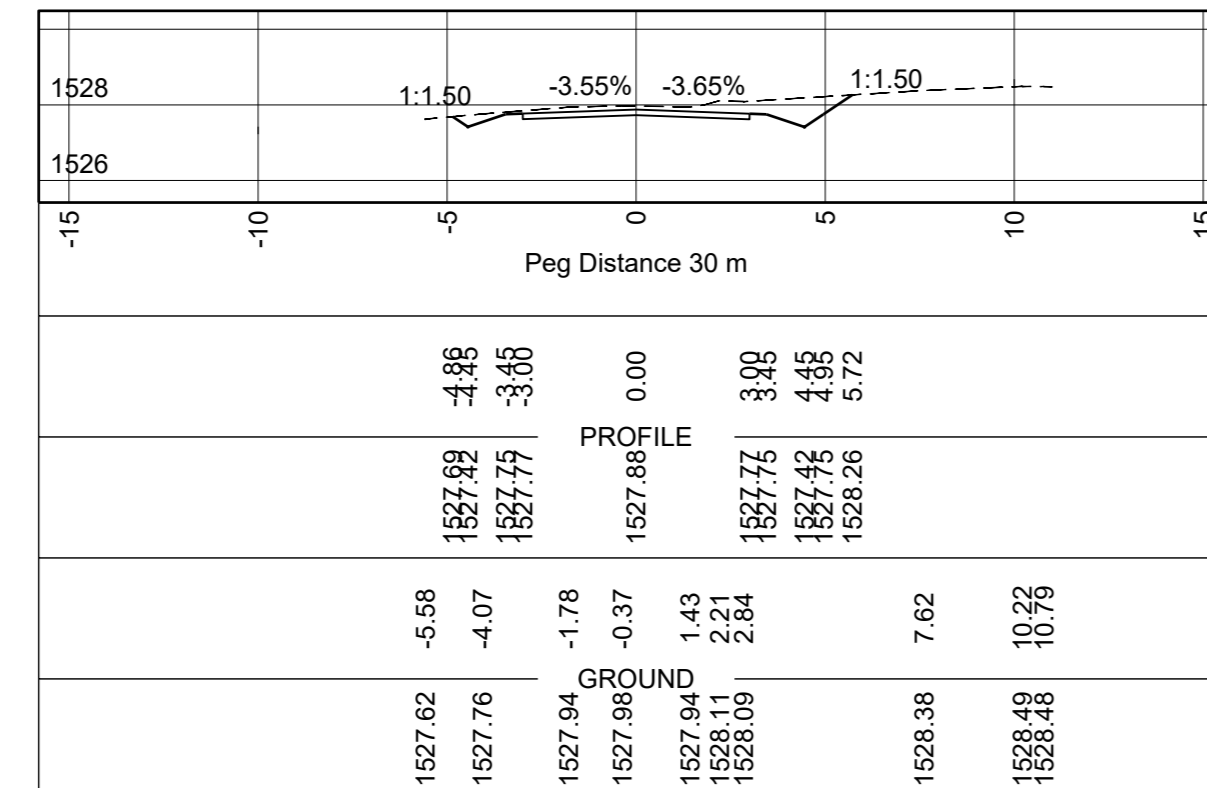
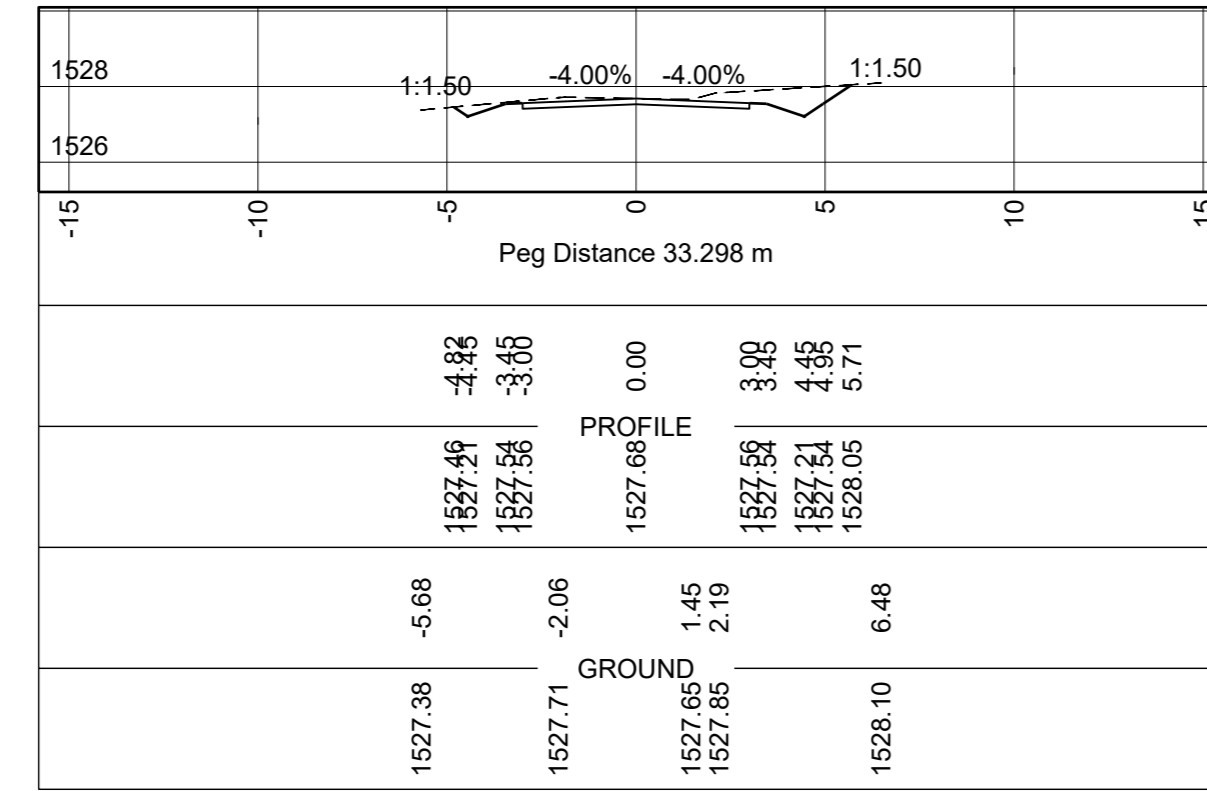
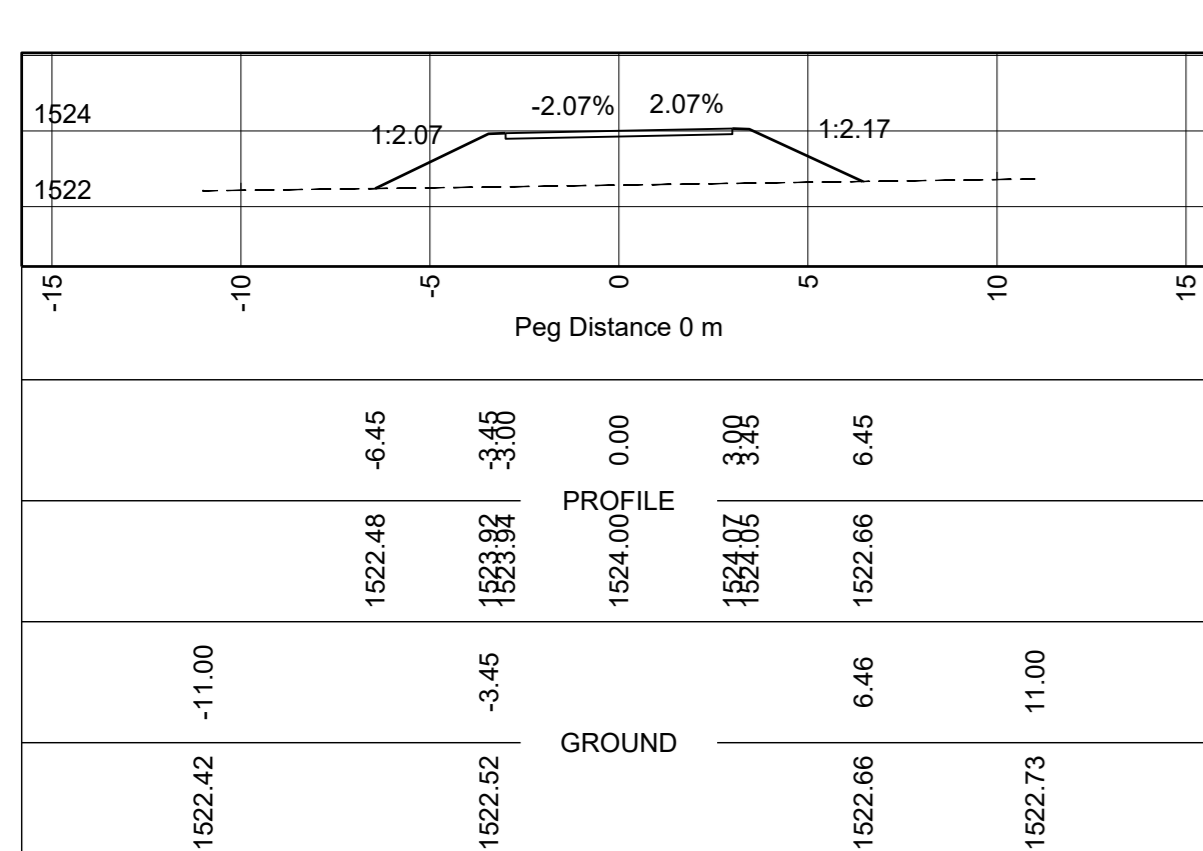
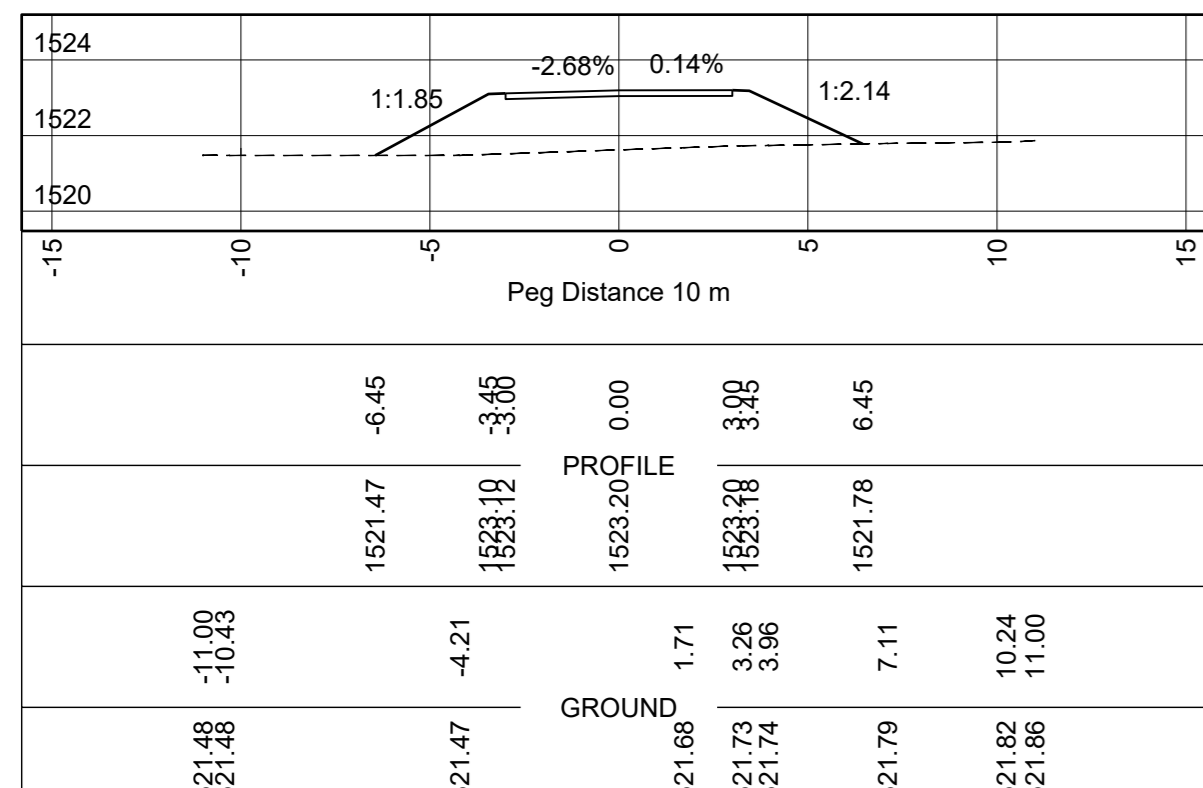
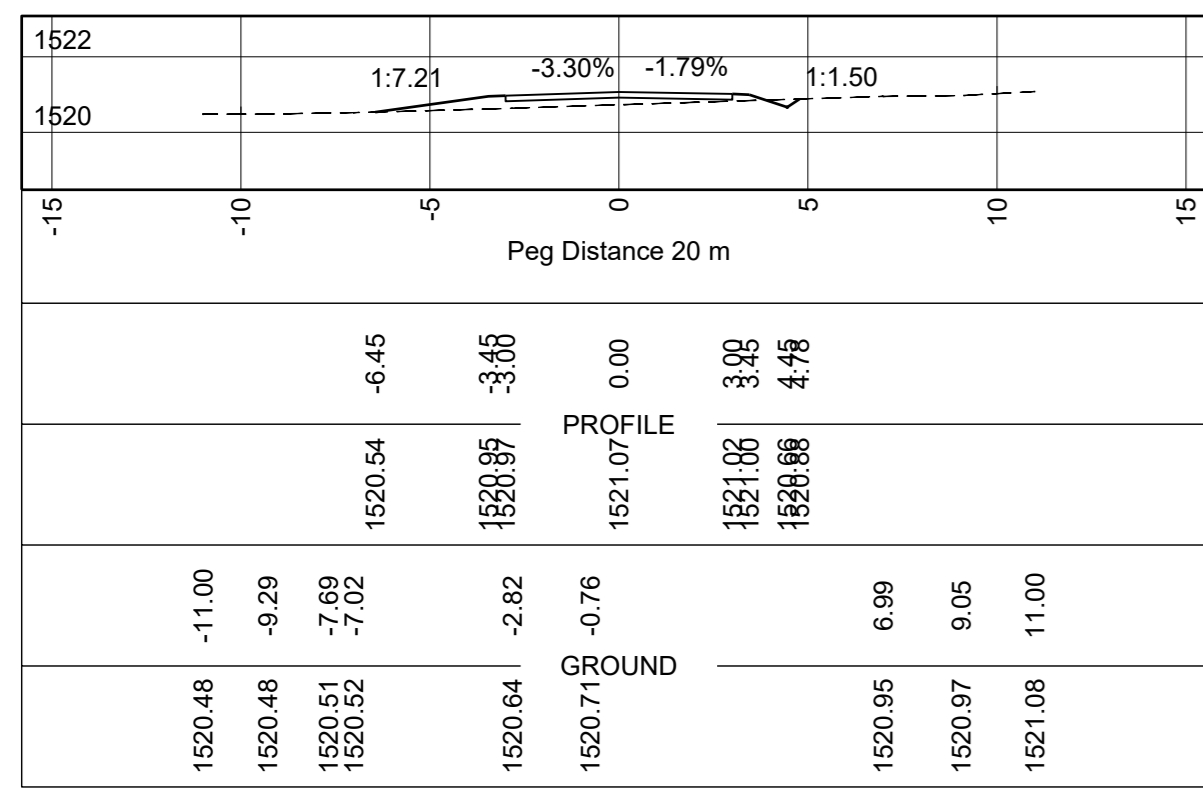
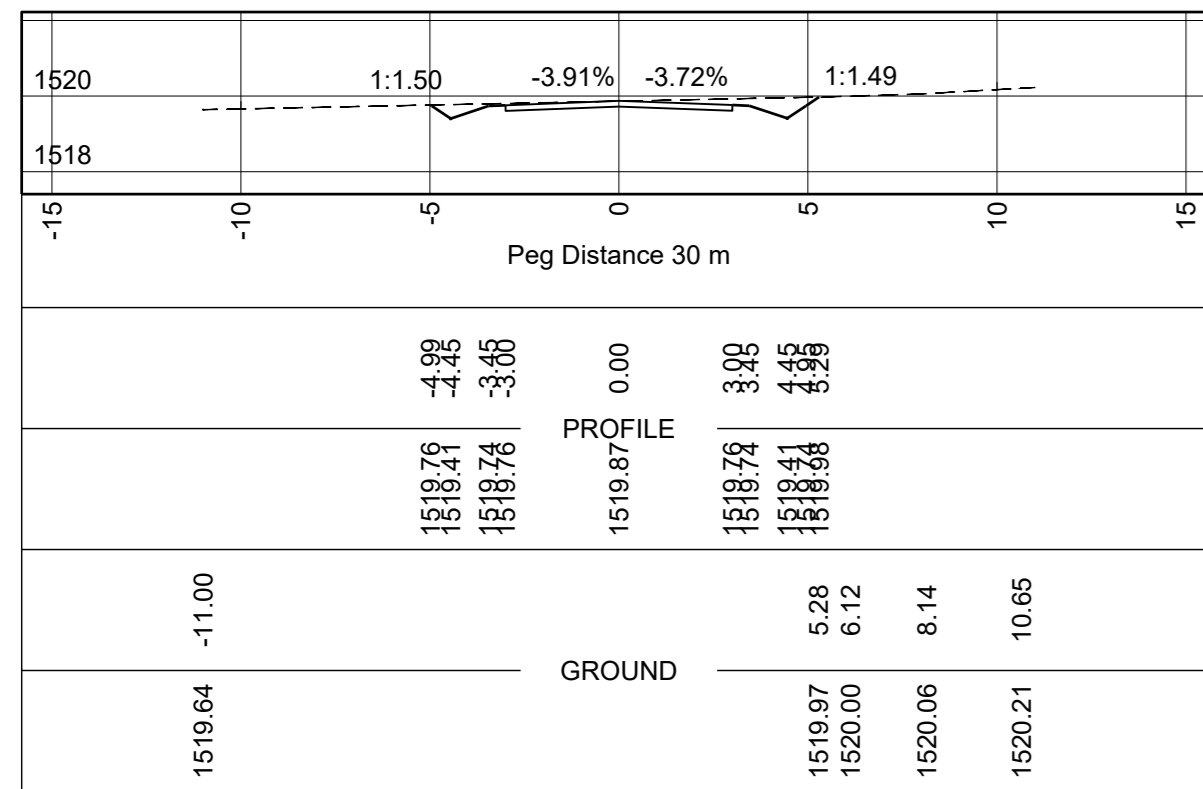
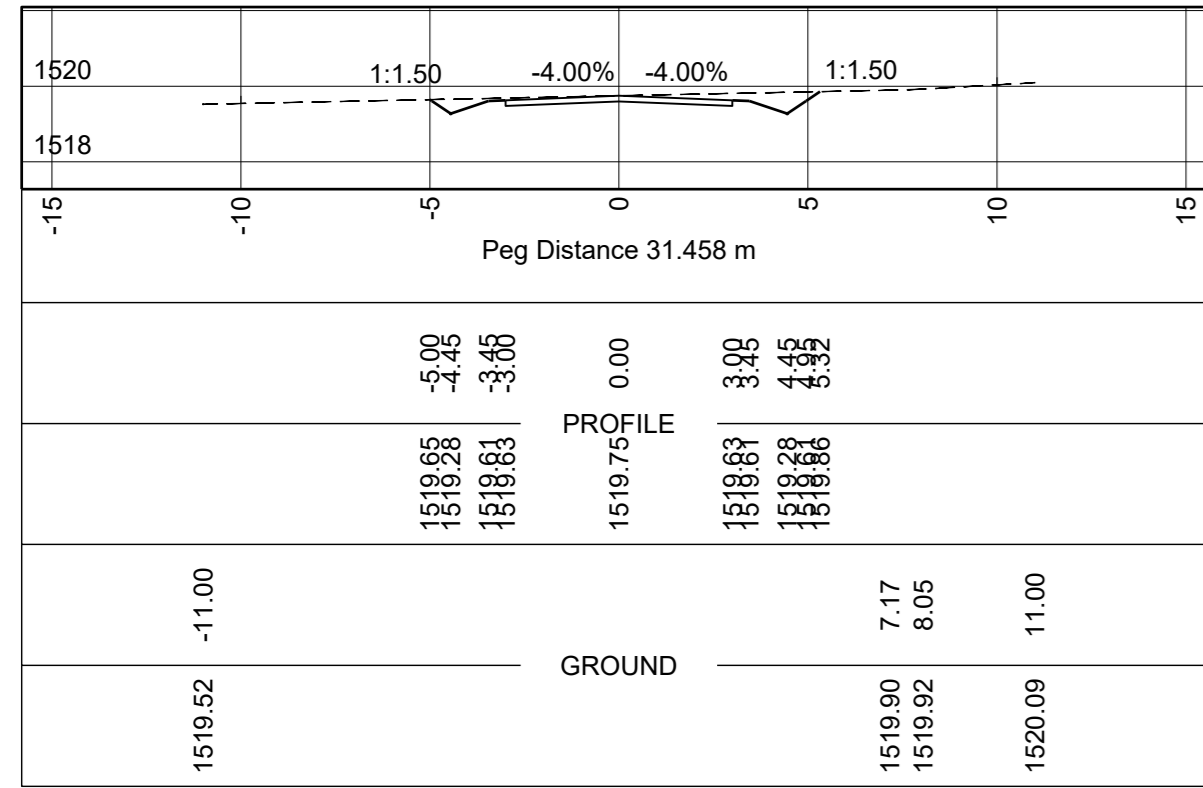
HOWICK TO MOOI RIVER

CROSS SECTIONS DESIGN FOR INTERSECTING/ ACCESS ROADS

STAKED KM DISTANCE	SHEET 2 OF 3
AS SHOWN	PLAN NO. C46112
SCALE	VERT 1:200

ACCESS 45+468 LHS

ACCESS 45+787 LHS



SYMBOL	DATE	DESCRIPTION	CHECKED	SIGNED
AMENDMENTS				

**AS BUILT**

SUPERVISING ENGINEER \_\_\_\_\_ DATE \_\_\_\_\_

SUPERVISING AUTHORITY \_\_\_\_\_

CONTINUED FROM: C 46112	DESIGNED BY: N. MAHOMED
CONTINUED ON: C 46114	CHECKED BY: S. NAIDOO
LONG SECTION NO: C 46109	DRAWN BY: M. FYNN
DESIGN PLAN NO: C 46053	CHECKED BY: S. NAIDOO
NAIDU CONSULTING - CONSULTING ENGINEER	
K. GOVENDER SIGN: _____ DATE: _____	

Designed by-

Naidu Consulting no.- D464/2902/01

Department: Transport  
Province of KwaZulu-Natal

MAIN ROAD 165 (HOWICK - MOOI RIVER)

PORTION  
UPGRADING PORTION OF P165 : KM 38+295 TO KM 46+595  
HOWICK TO MOOI RIVER  
CROSS SECTIONS DESIGN FOR INTERSECTING/ ACCESS ROADS

STAKED KM DISTANCE AS SHOWN	SHEET 3 OF 3
SCALE HOR 1:200 VERT 1:200	PLAN NO. <b>C46113</b>

C46113